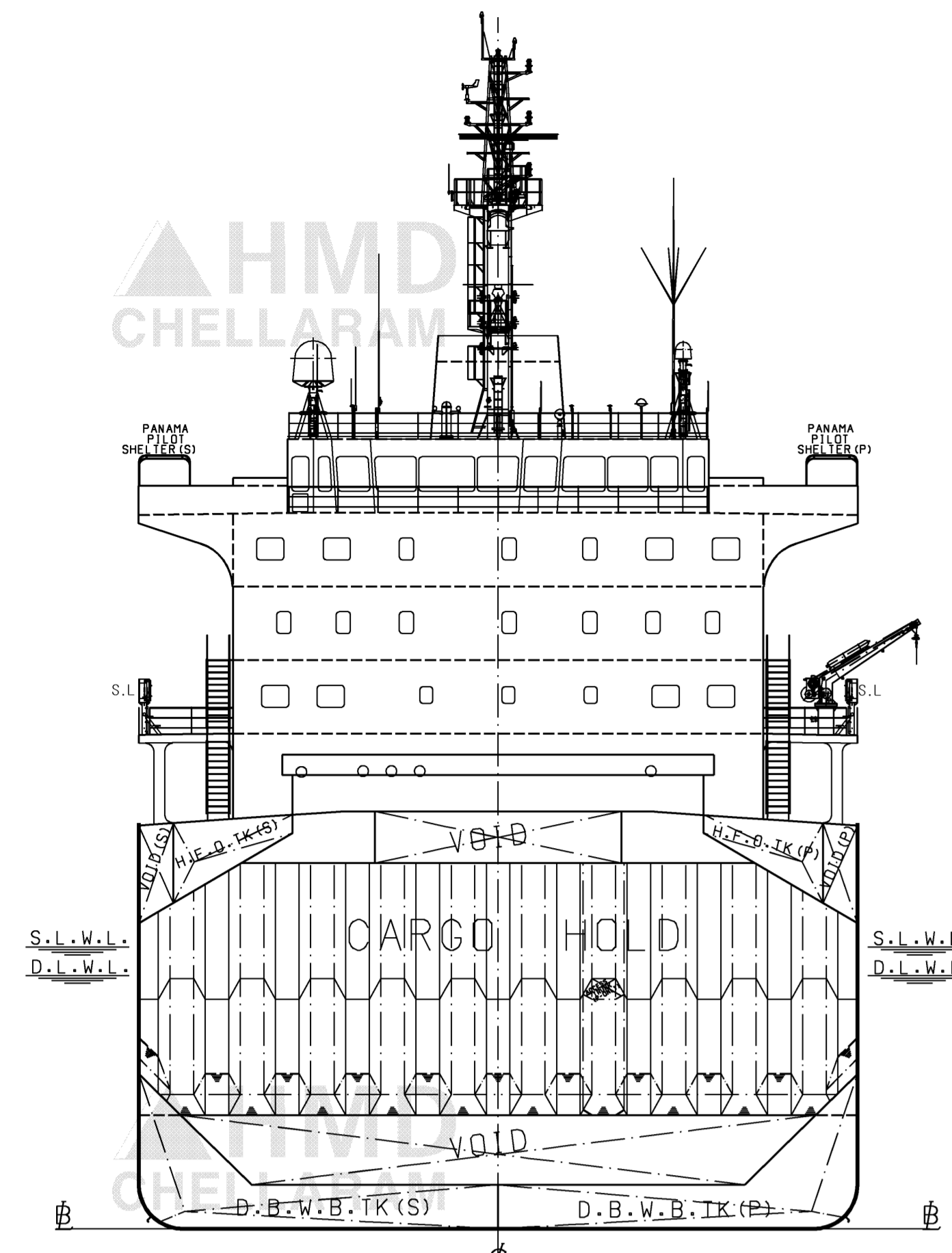
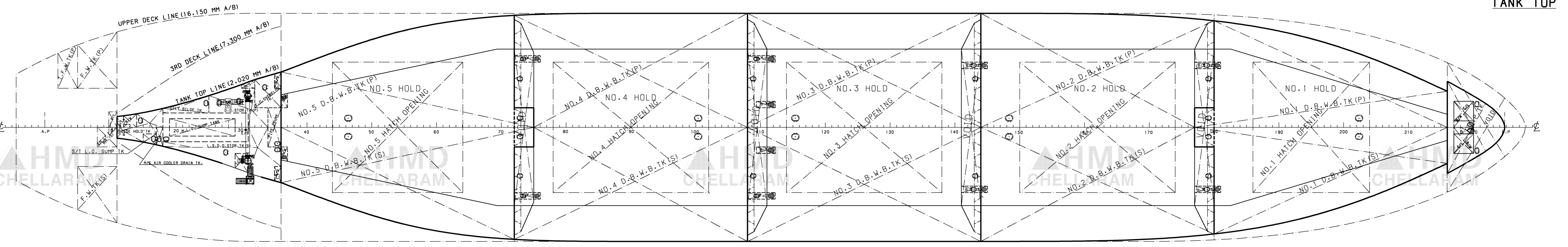
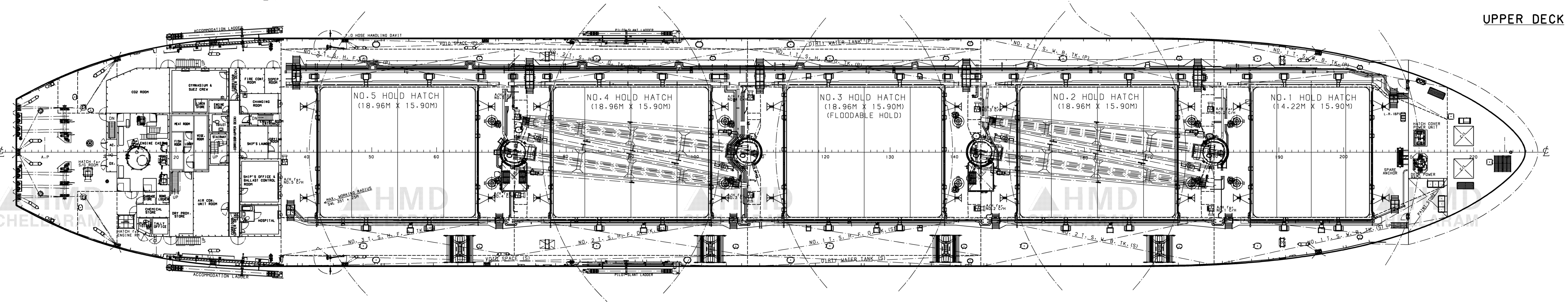
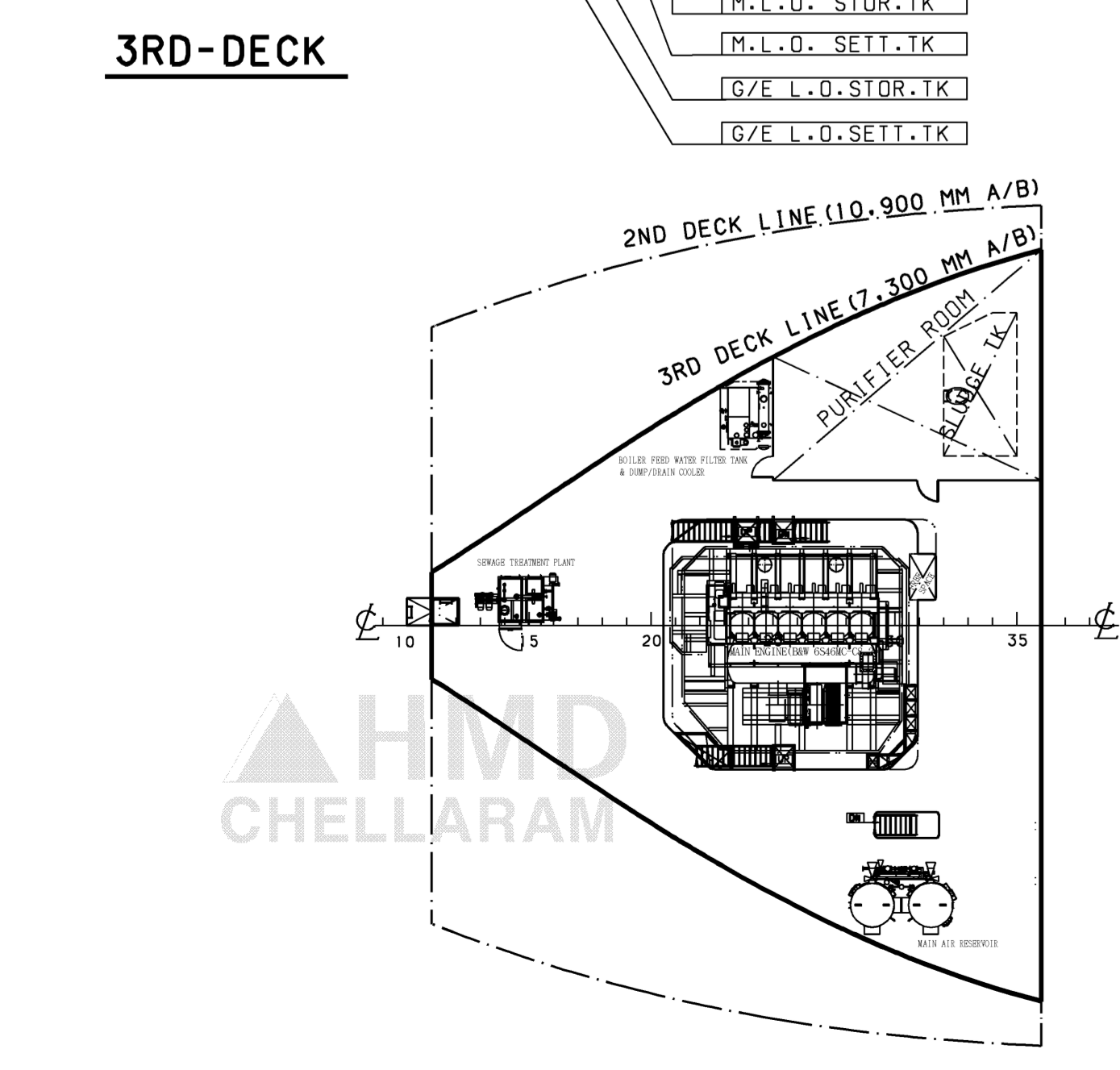
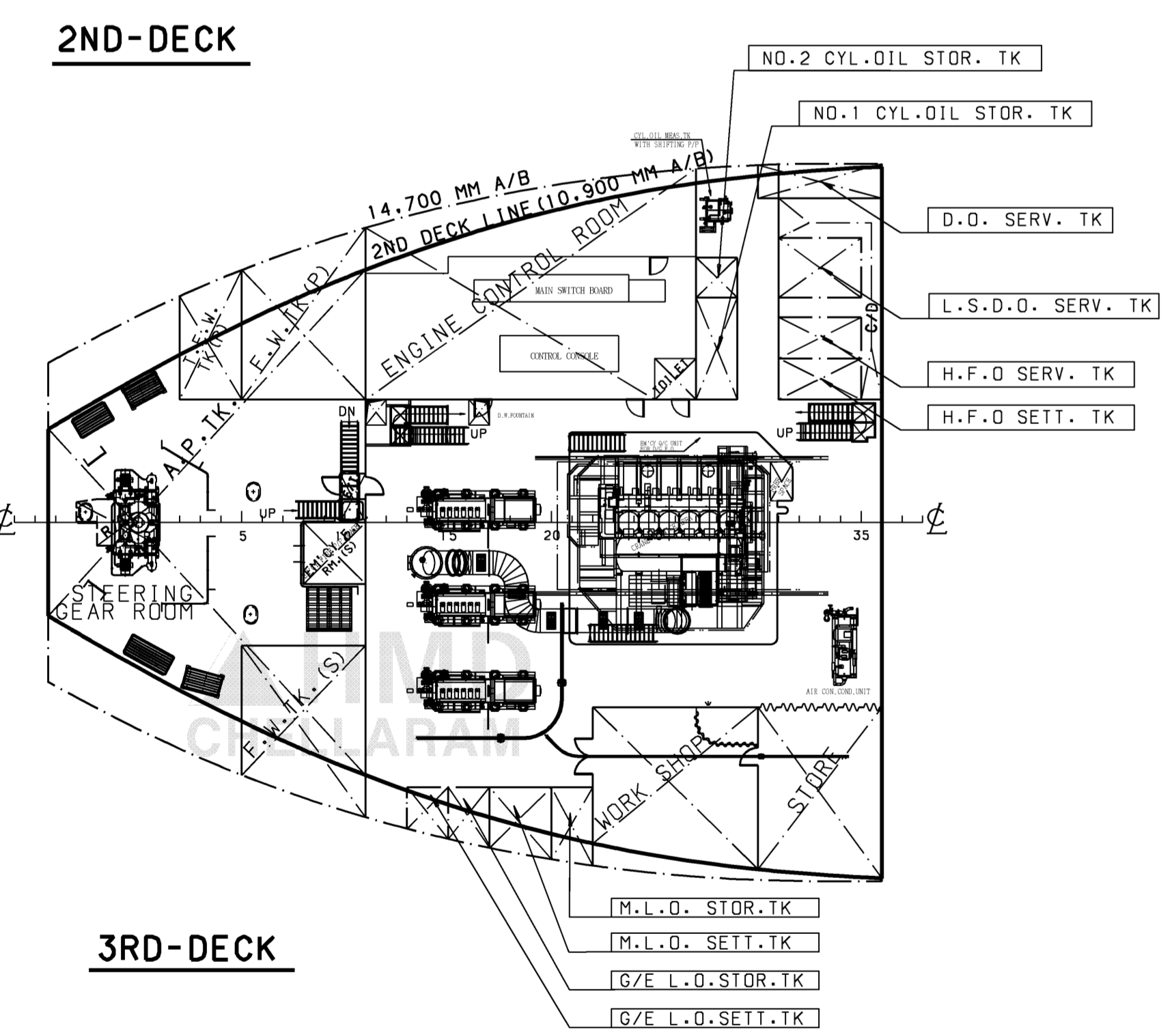
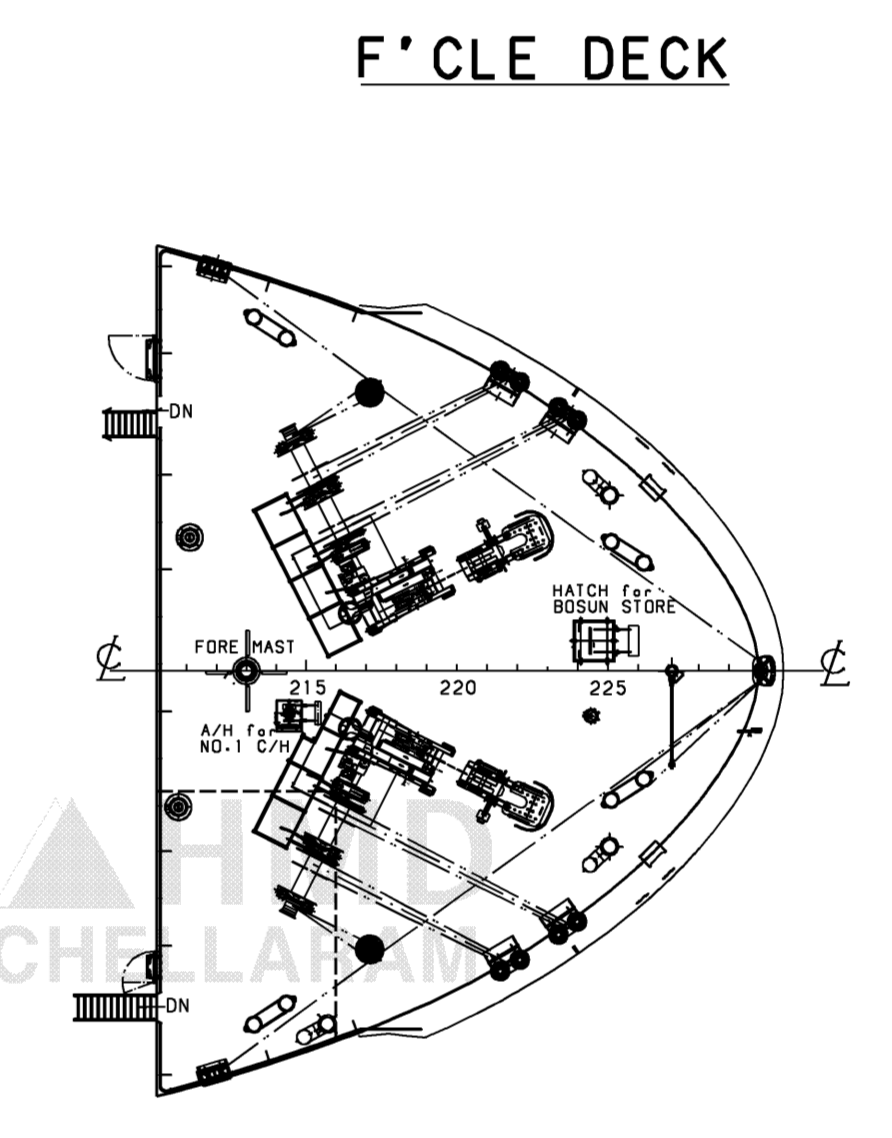
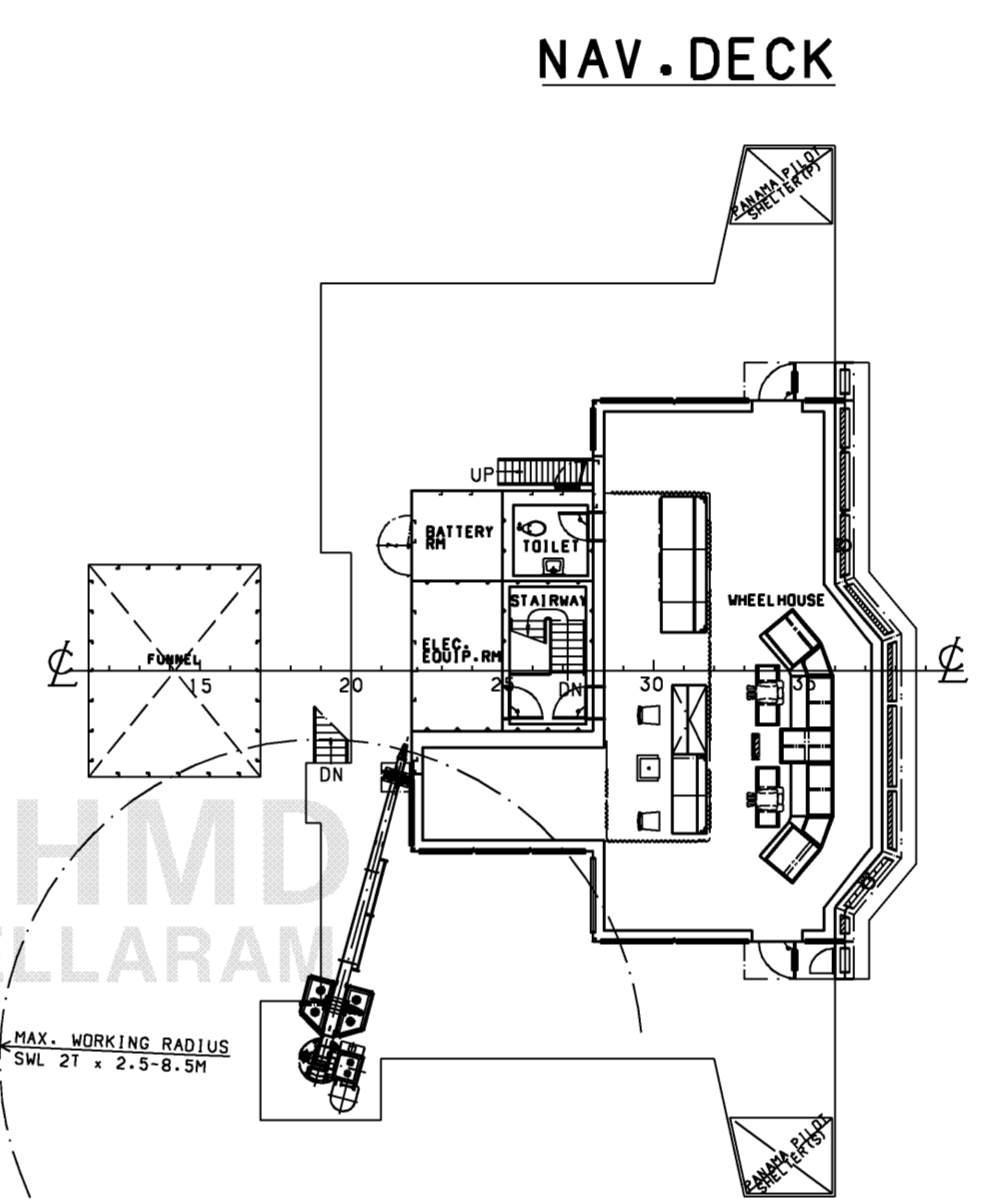
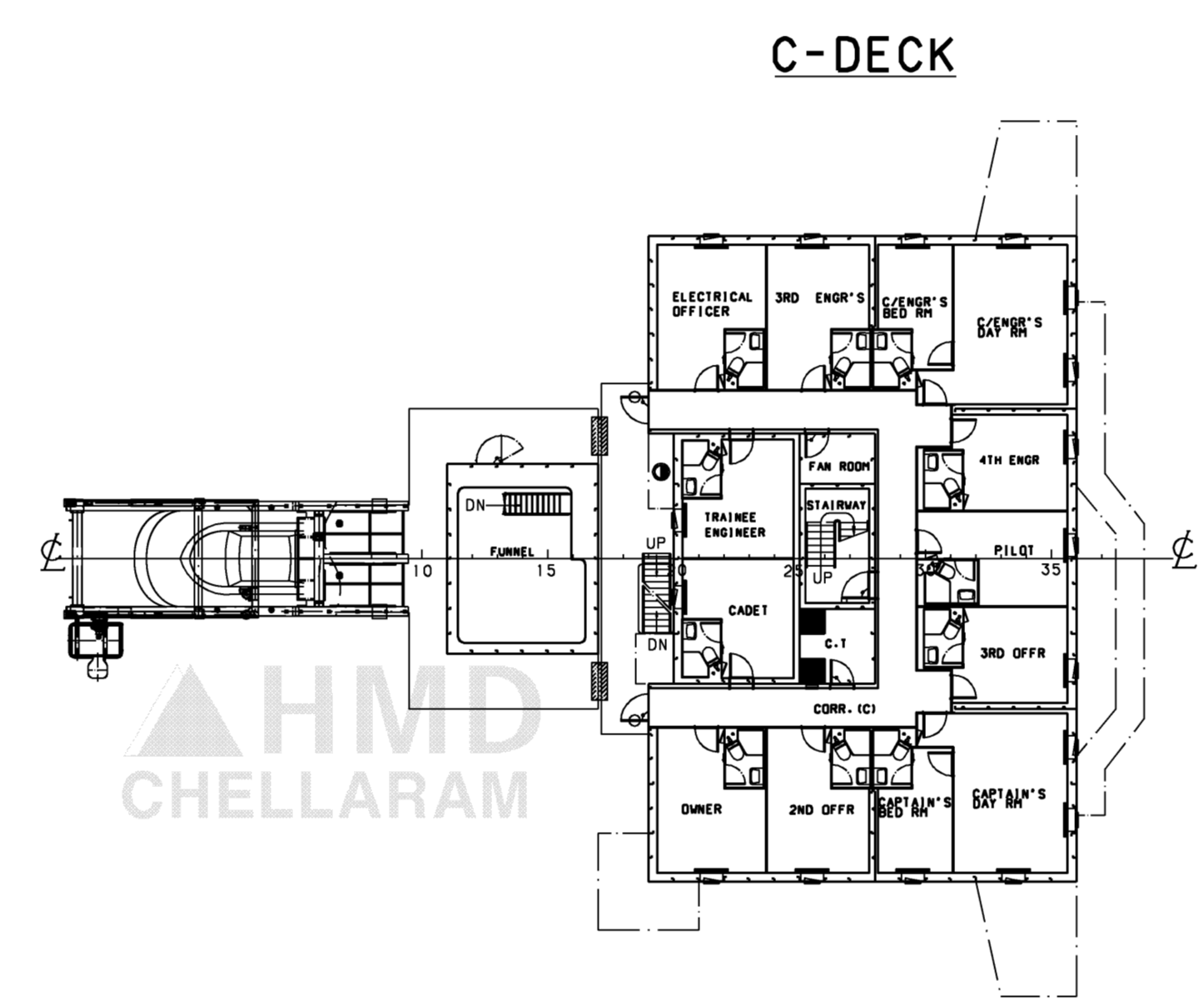
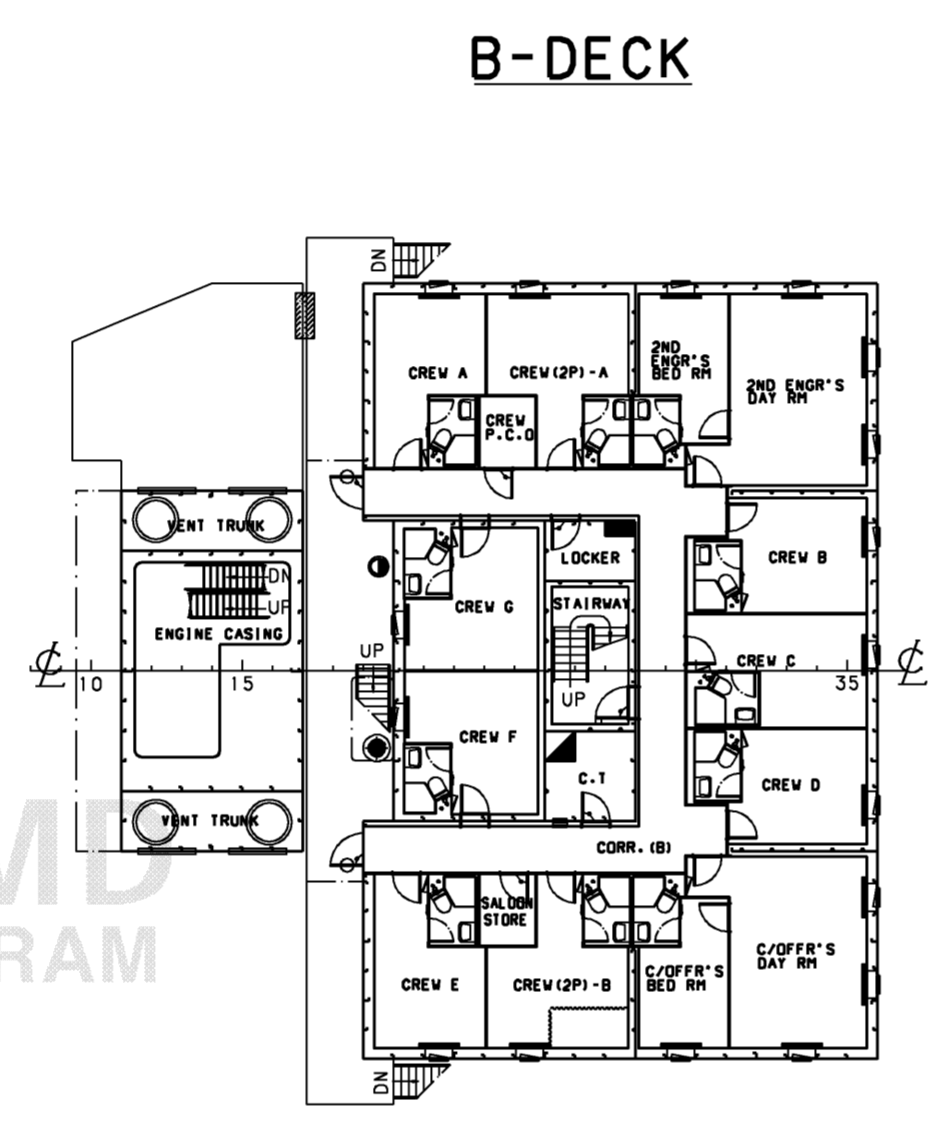
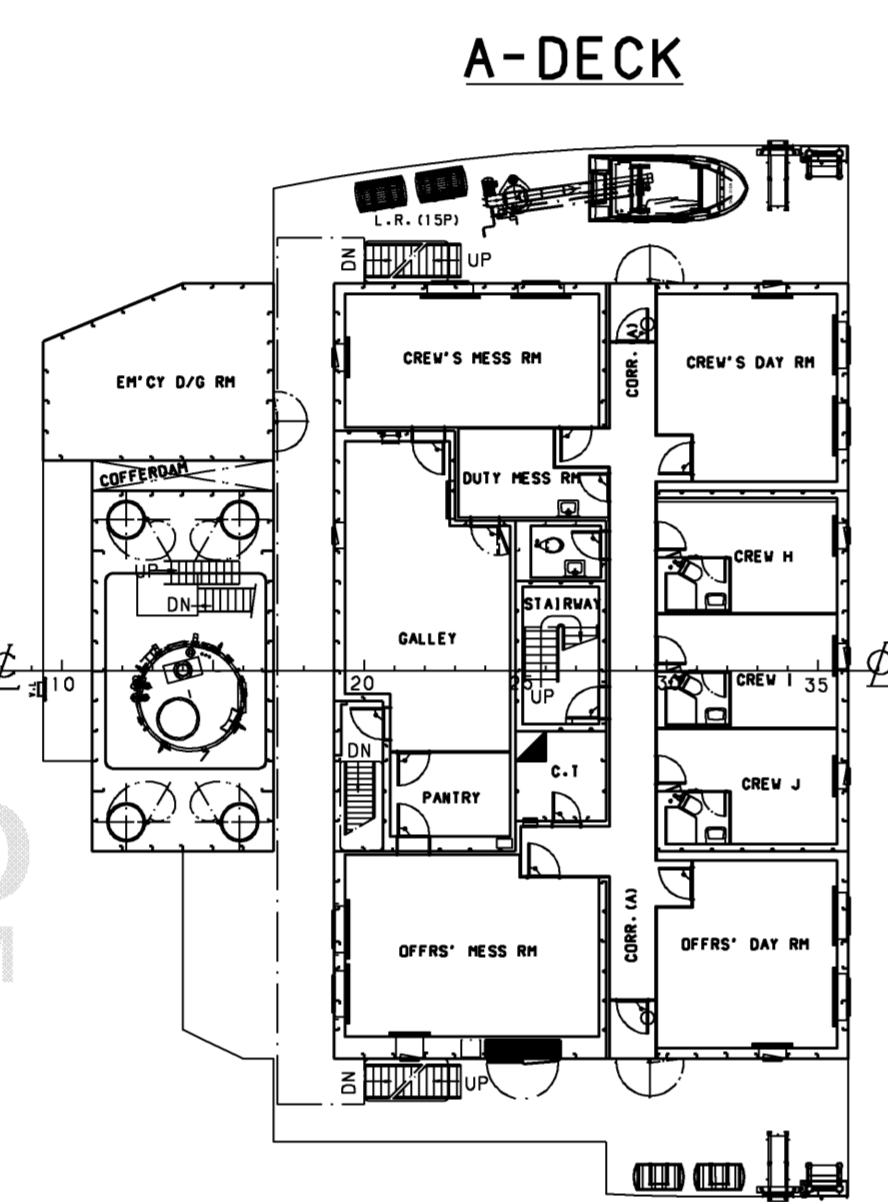
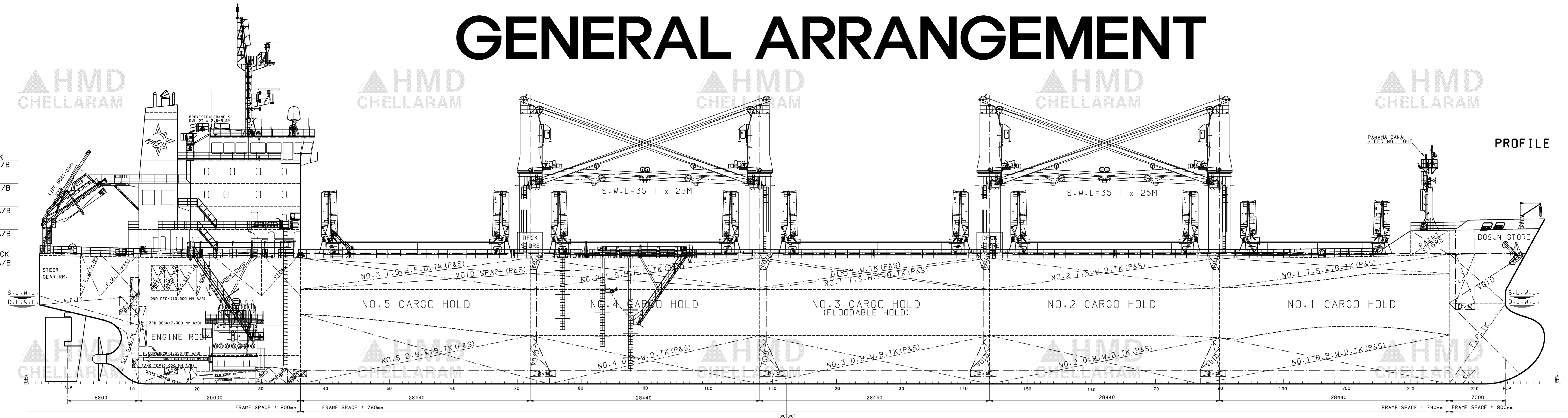


GENERAL ARRANGEMENT



- NAV. DECK
27.700 A/B
- C-DECK
24.850 A/B
- B-DECK
22.000 A/B
- A-DECK
19.150 A/B
- UPPER DECK
15.600 A/B



PLAN HISTORY						
DATE	REV.	MARK	DESCRIPTION	DRAWN	CHECKED	APPROVED
2012-04-12	FIN		FINALLY PREPARED FOR 6121			

PRINCIPAL PARTICULARS	
LENGTH	O. A. 186.40 M
LENGTH	B. P. 178.00 M
BREADTH	M.L.D. 27.80 M
DEPTH	M.L.D. 15.60 M
DRAFT	DESIGN M.L.D. 9.80 M
	SCANT. M.L.D. 10.90 M
	SCANT. EXT. 10.918 M
MAIN ENGINE :	HYUNDAI - B&W 6S46MC-C8(Tier II)
	Nominal rating : 8,280 kW X 120RPM
	MCR : 7,860 kW X 129.0 RPM
	NCR : 6,680 kW X 122.2 RPM
SERVICE SPEED AT DESIGN LOAD (NCR WITH 15% SEA MARGIN)	Abt. 14.8 KNOTS
CLASSIFICATION : LR	
	+100A1, Bulk Carrier CSR, BC-A(hold No.2&4 may be empty), Grab(20), ESP, +HMS, LI, +LMC, UMS, Ship Right (ACS(B)) with descriptive notes, Green Passport, Part Higher Tensile Steel, Ship Right(SCM,BWM) (S+F)
FREEBOARD TYPE	"B"
FLAG	HONG KONG
COMPLEMENT	27+6SUEZ
IMO NUMBER	9601948

DEPT/NO/DEPT NAME		SHIP TYPE
5610	BASIC DESIGN DEPT	37,000 DWT CLASS BULK CARRIER
REV. NO. 3759	SHIP NO. 6121	SHIP NAME DARYA JAMUNA
DATE 2012.04.12	APPROVED S.H. PARK	NAME OF DRAWING GENERAL ARRANGEMENT
	CHECKED J.B. LEE	SCALE 1/200
	D.W. KIM	DRAWING NO. 1A000001
	H.J. EOM	REV. NO. FIN
	HYUNDAI MIPD DOCKYARD CO., LTD. ULSAN, KOREA	CONSOLIDATED NO. B-2

CAUTION	
THIS DRAWING OR DOCUMENT IS THE PROPERTY OF HYUNDAI MIPD DOCKYARD CO., LTD. AND IT MUST NOT BE PARTIALLY OR WHOLLY COPIED OR USED FOR ANY OTHER PURPOSE WITHOUT PRIOR WRITTEN PERMISSION OF HYUNDAI MIPD DOCKYARD CO., LTD.	