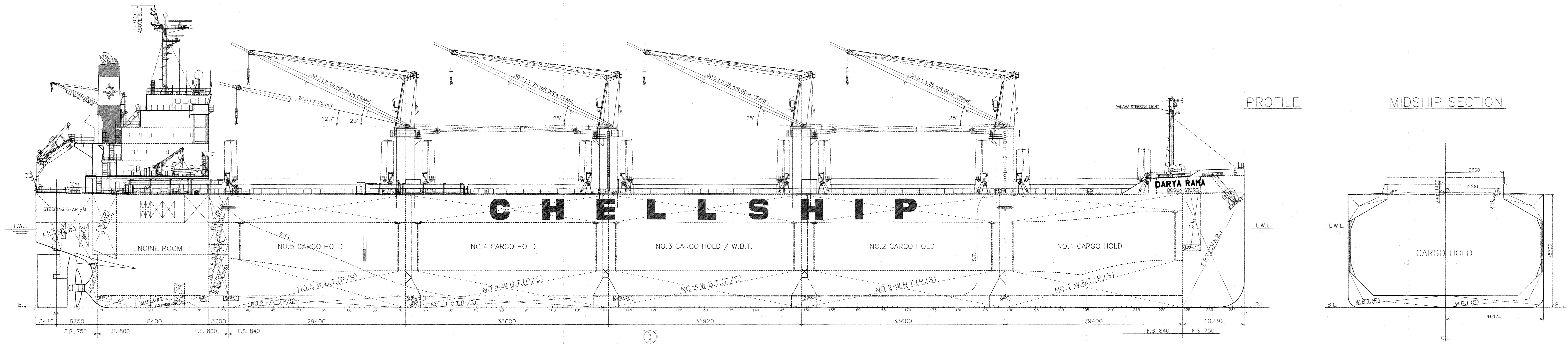


# GENERAL ARRANGEMENT



A DECK

B DECK

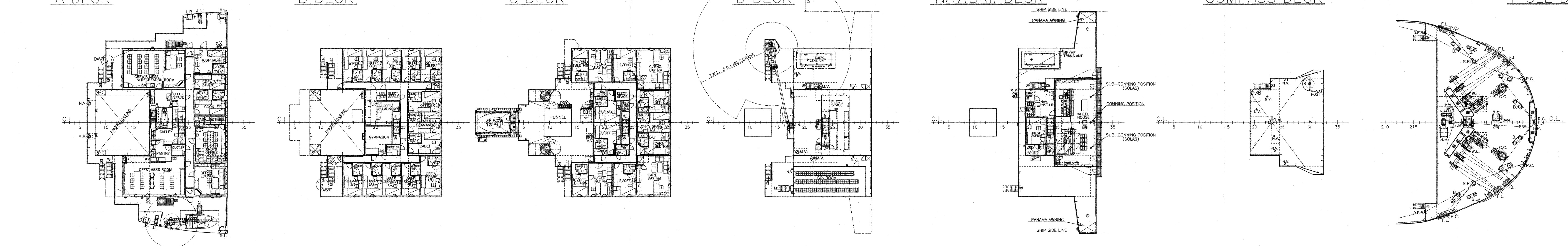
C DECK

D DECK

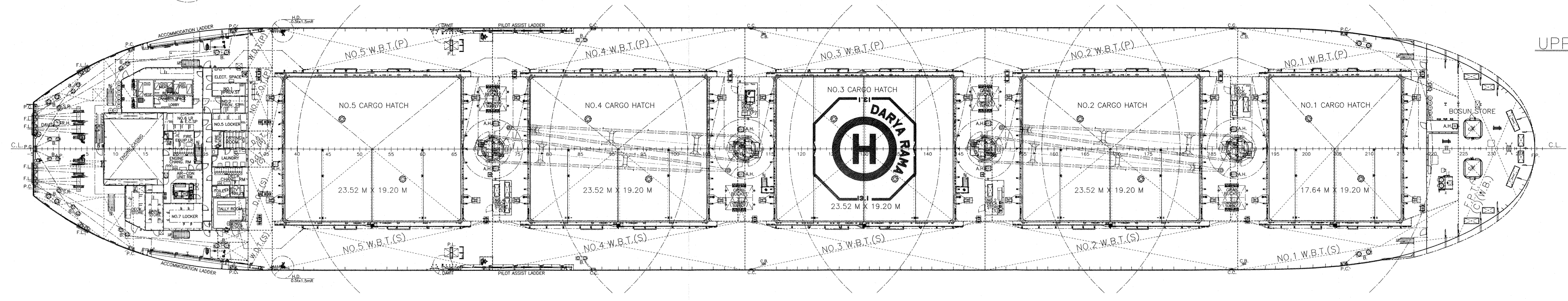
NAV. BRI. DECK

COMPASS DECK

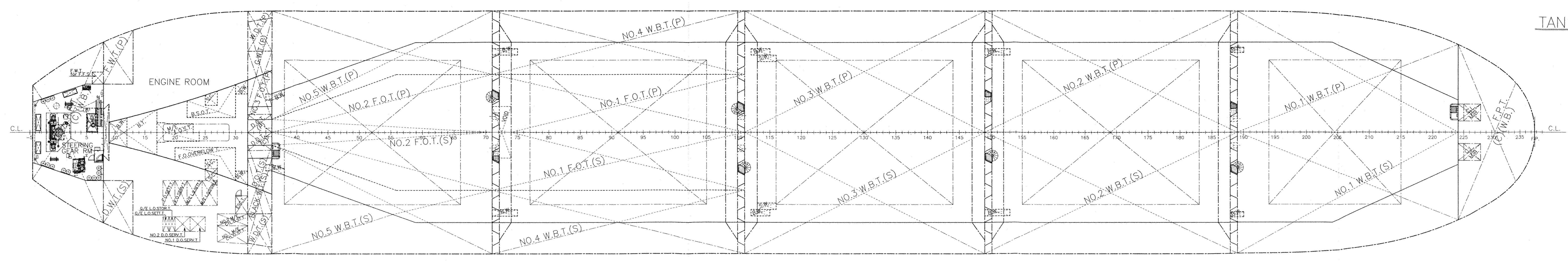
F'CLE DECK



UPPER DECK



TANK TOP



**PRINCIPAL PARTICULARS**

LENGTH (O.A.)	199.92 M
LENGTH (P.P.)	196.50 M
BREADTH (MLD)	32.26 M
DEPTH (MLD)	18.70 M
DRAFT (SUMMER EXT.)	13.023 M
DEADWEIGHT	61212 t
GROSS TONNAGE	35035
MAIN ENGINE	MITSUI-MAN B&W 6S50ME-B9.5 X 1 SET
M.C.O.	7880 kW X 99.0 min <sup>-1</sup>
SERVICE SPEED	about 14.5 KNOTS
CLASSIFICATION	NK NS* (CSR, BC-A, BC-XII, GRAB20, EQ C DG, PSPC-WBT, NC) (ESP) (IHM) (PSCM), MNS* (MO)
Descriptive Note	Strengthened for heavy cargoes loading where holds Nos. 2 and 4 may be empty

**DARYA RAMA**  
SNO.3705

**GENERAL ARRANGEMENT**  
— FINISHED PLAN —

LIST NO. C-3

IMO NO.	9840790	DATE	2018/6/25	DWG. NO.	C02-002-00
GENERAL MANAGER	T. Kawahara	SCALE	1/250		
ASST. G. MANAGER	-----				
MANAGER	-----				
ASST. MANAGER	K. Shigemitsu				
STAFF	S. Matsumoto				
DRAWN	R. Izaki				
	T. Tsuchiya				

SHIN KURUSHIMA DOCKYARD CO., LTD.  
EHIME JAPAN  
ENGINEERING DIVISION

