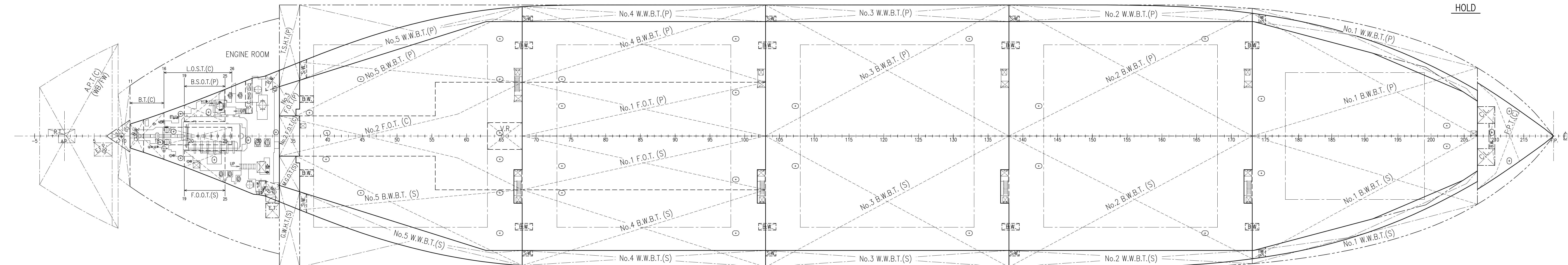
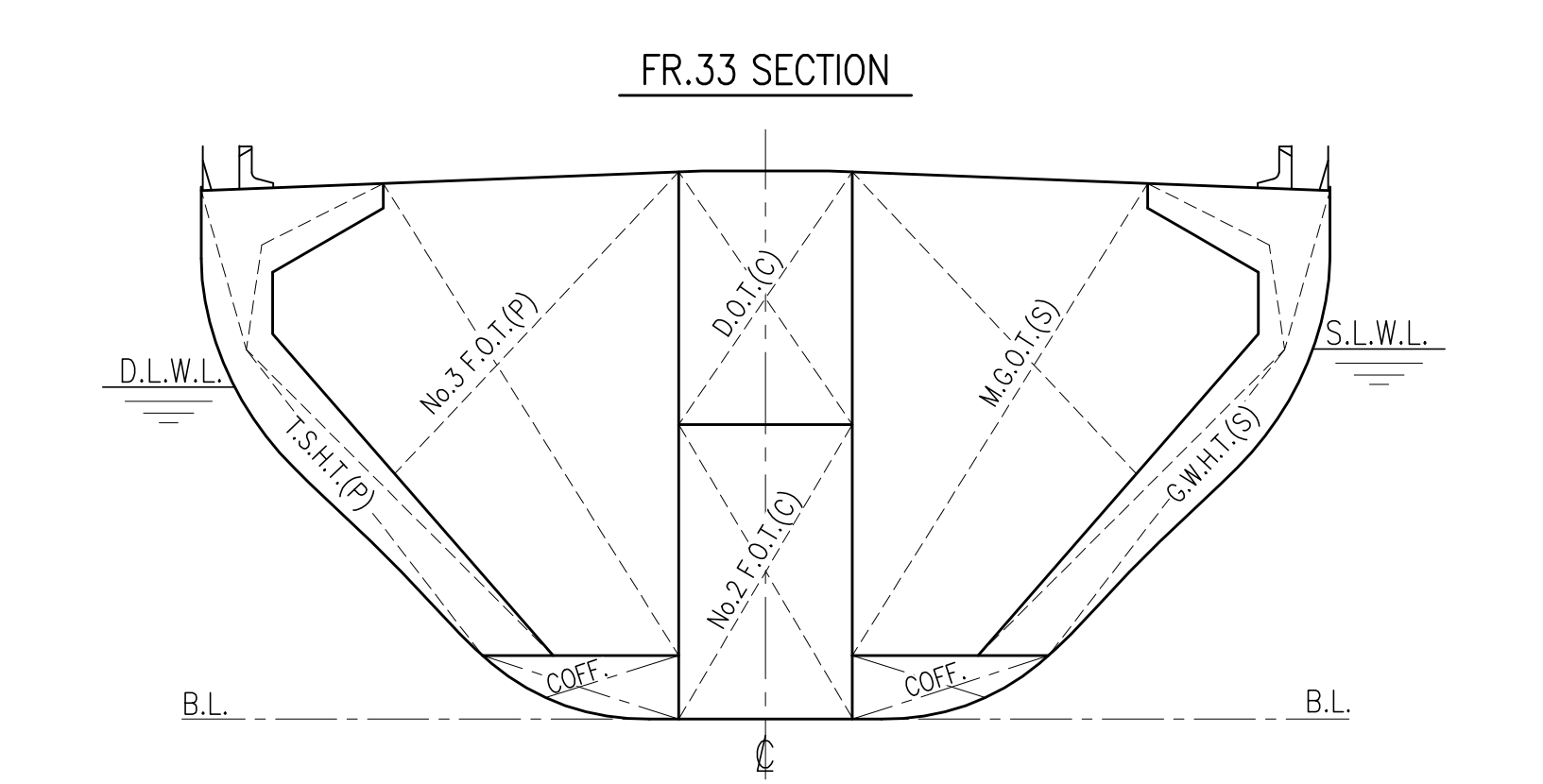
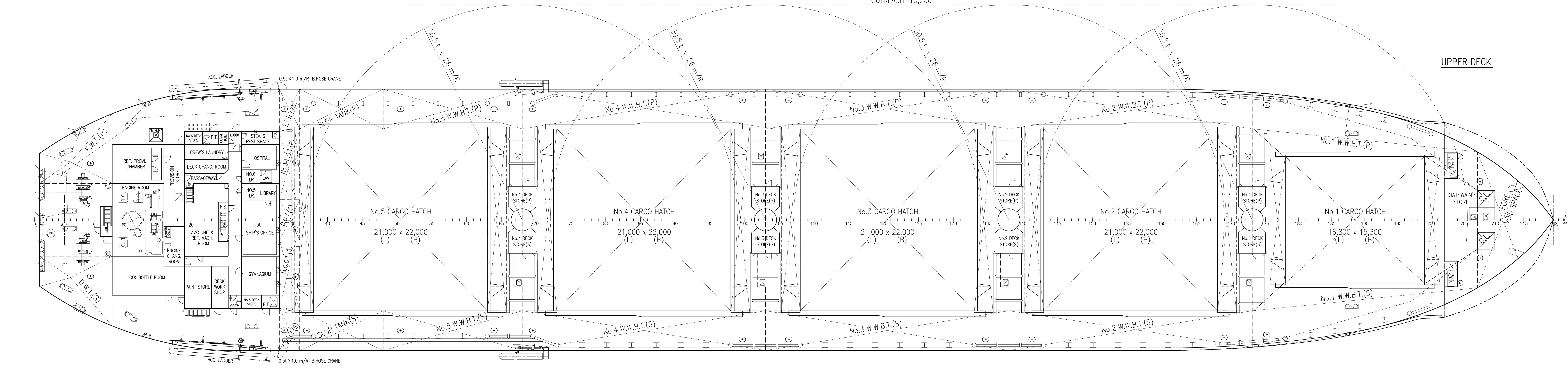
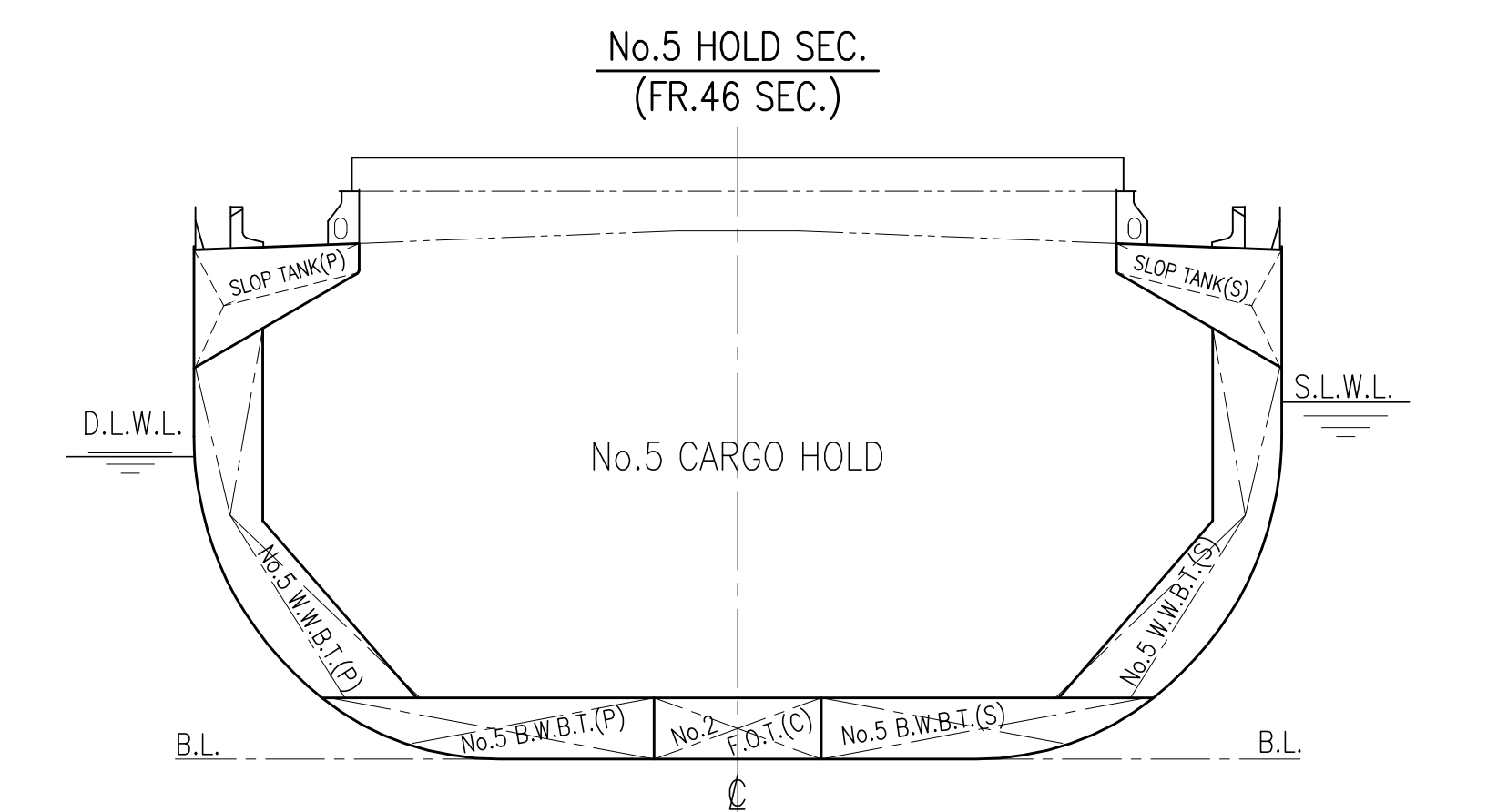
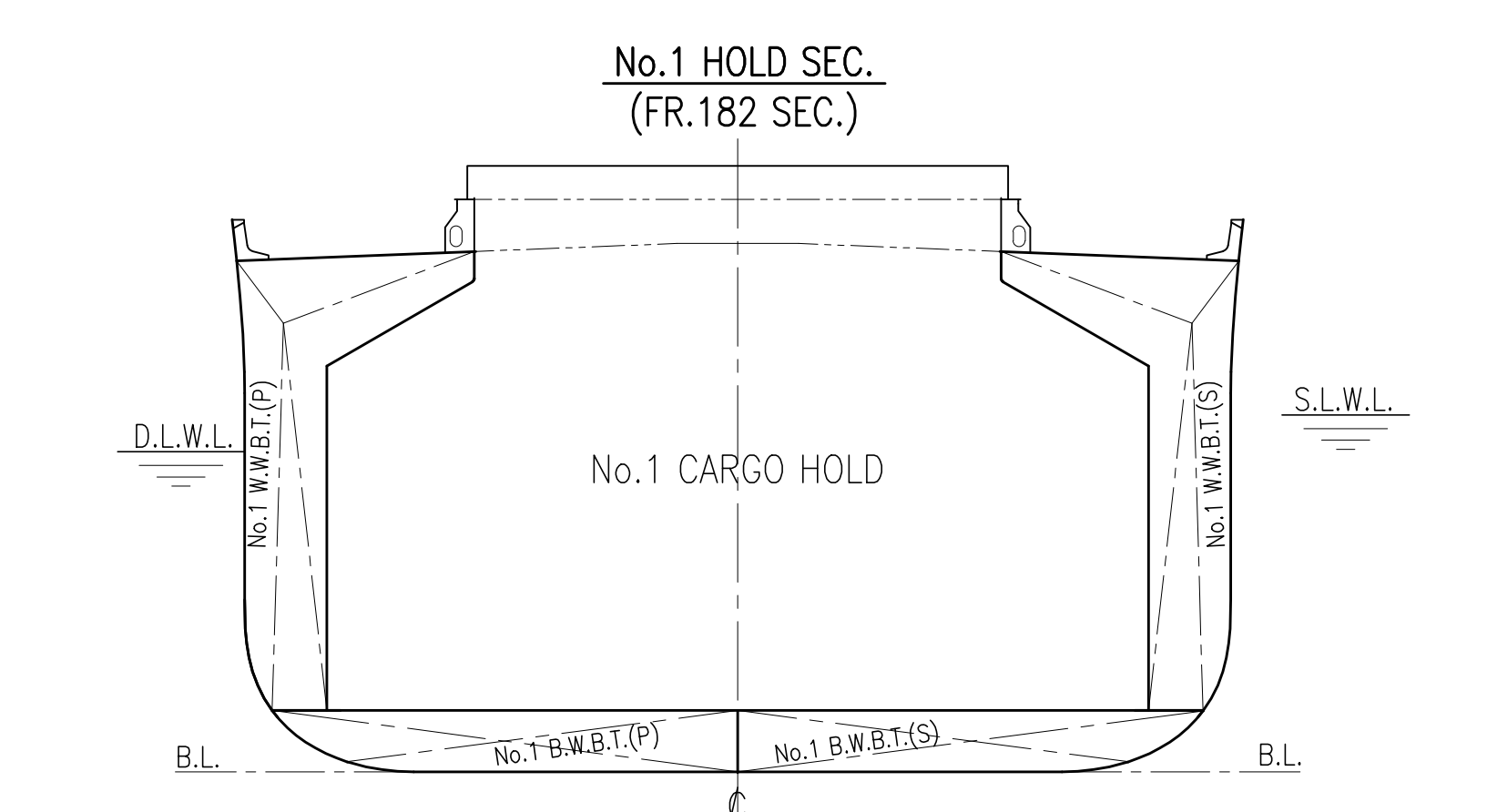
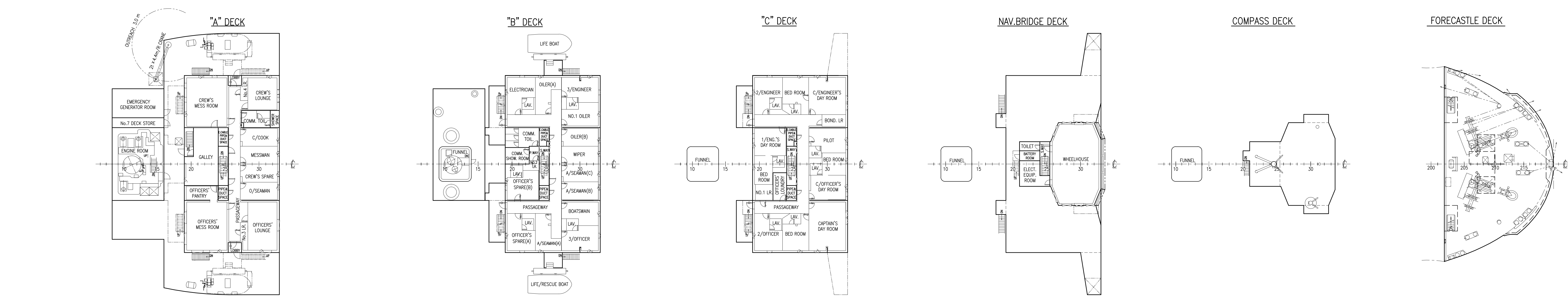
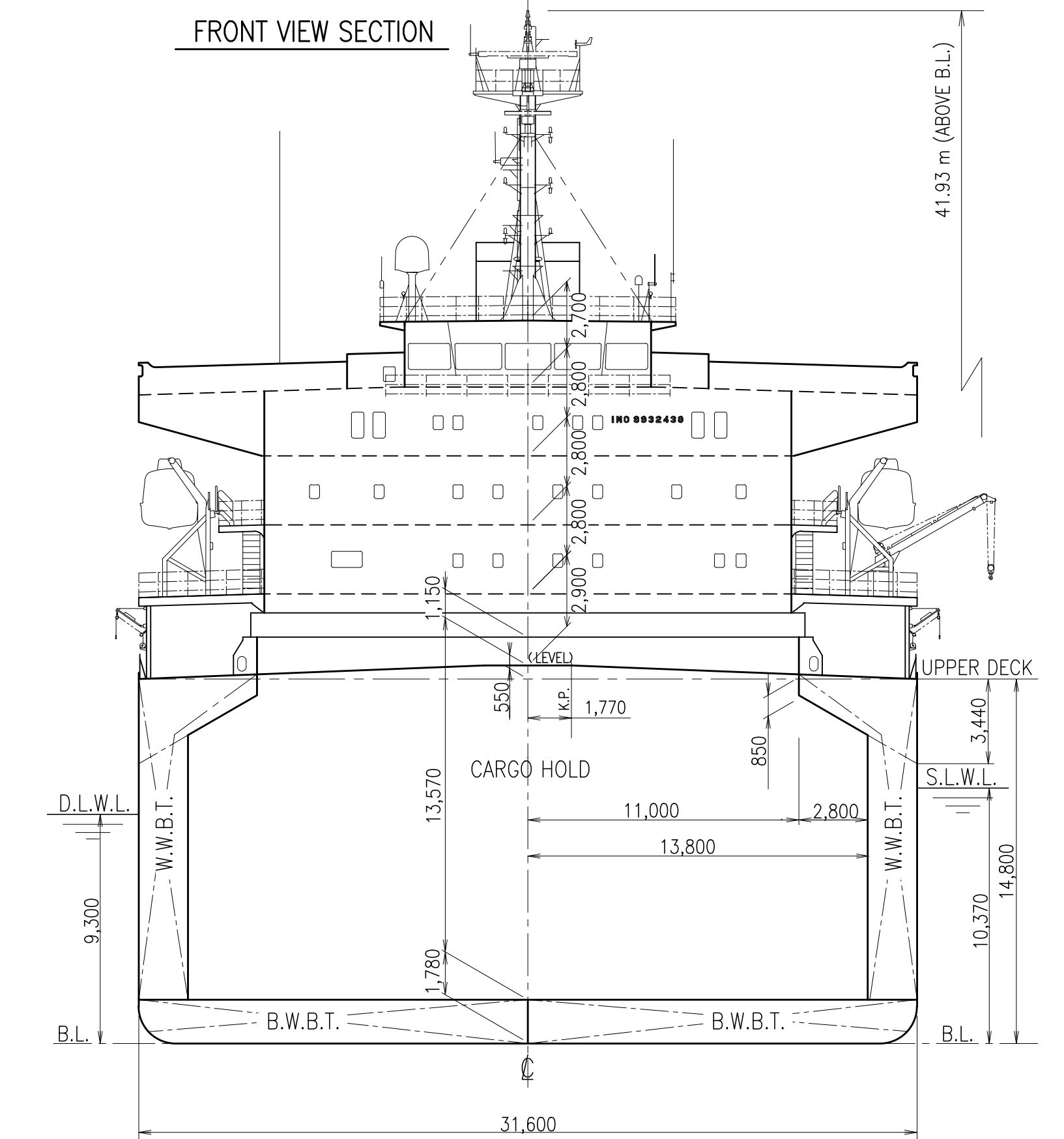
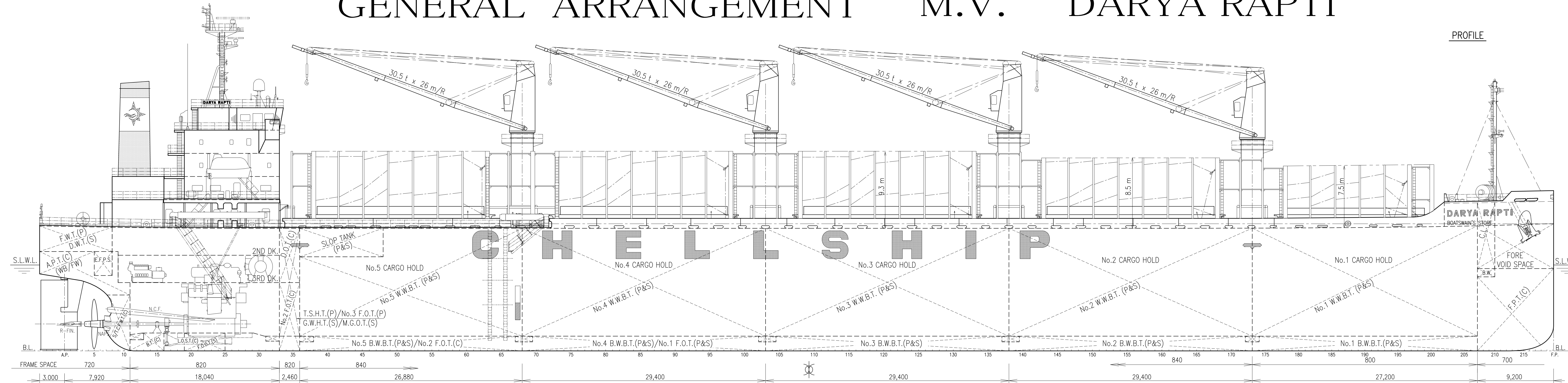
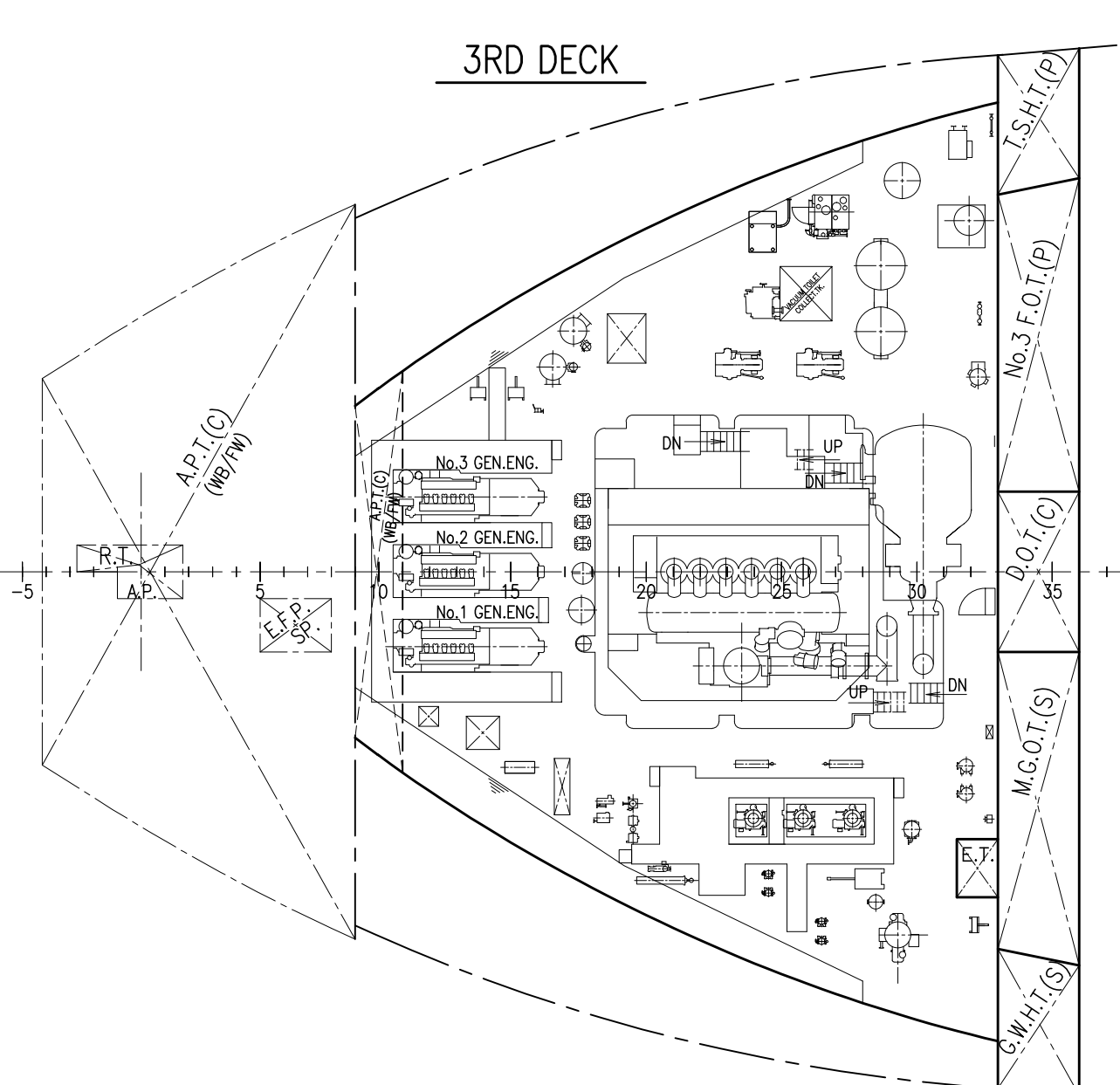
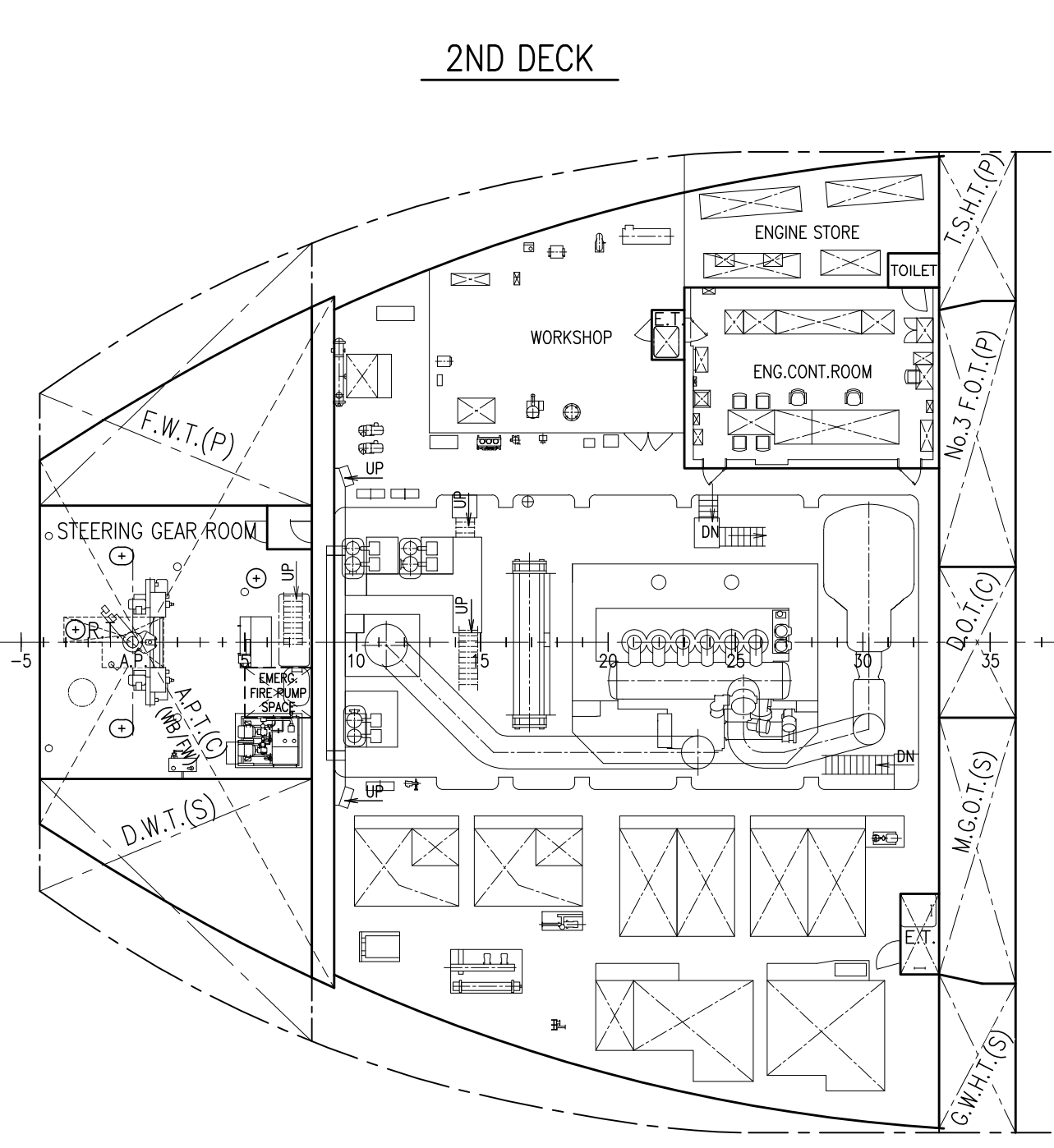


GENERAL ARRANGEMENT M.V. "DARYA RAPTİ"



PRINCIPAL PARTICULARS

LENGTH (O.A.)	182.94 m
LENGTH (P.P.)	179.90 m
BREADTH (MLD.)	31.60 m
DEPTH (MLD.)	14.80 m
DESIGNED DRAUGHT (EXT.)	9.322 m
SCANTLING DRAUGHT (EXT.)	10.392 m
TIMBER SUMMER DRAUGHT (EXT.)	10.635 m
DEADWEIGHT (DESIGN/SCANTLING)	34,543/40,058 t
INTERNATIONAL GROSS TONNAGE	24,472 t
MAIN ENGINE	MAN B&W 6S46ME-BB.5-HPSCR x 1 set
M.C.O.	5,680 kW (7,723 PS) at 105.0 min ⁻¹
N.C.O. (83.36% M.C.O.)	4,735 kW (6,438 PS) at 98.8 min ⁻¹
SERVICE SPEED (DESIGN DRAUGHT)	14.0 kts
COMPLEMENTS	24 P
CLASSIFICATIONS	NK : NS*/MNS* (BCM, BC-XII, GRAB, PSCC-WBT, NC), (PSCM), (IHM), (NOX-III(SCR)), (NVC-C+)
(Double hull construction applied to oil cargo holds)	
(NOX-III(2021)/M/ESCR), (G/E(Nos.1,2,3)/SCR)	



BIBLIOGRAPHY
 D DESIGNED FOR S910.
 (APRIL 26, 2022)

40,000 DWT, TYPE LOG/BULK CARRIER
 "HIGH BULK ADE"

S910

GENERAL ARRANGEMENT

FINISHED PLAN

SCALE 1/200

THE HAKODATE DOCK CO., LTD.
 HAKODATE, JAPAN

SHIP DESIGN DEPARTMENT

APPROVED: *M. Fujita*
 CHECKED: *K. Matsumoto*
 CHECKED: *W. Tamura*
 DRAWN: *S. Sawada*

DRAWING No. 000-305 REVISION No. 000-000
 FIN. PLANS LIST No. P-3