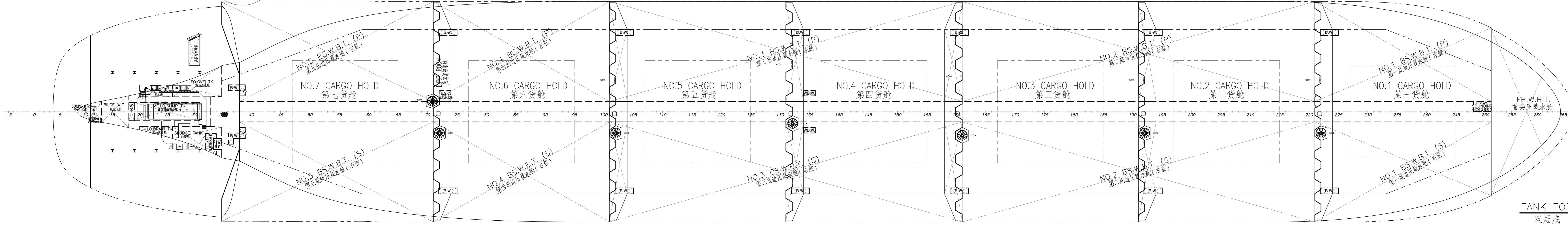
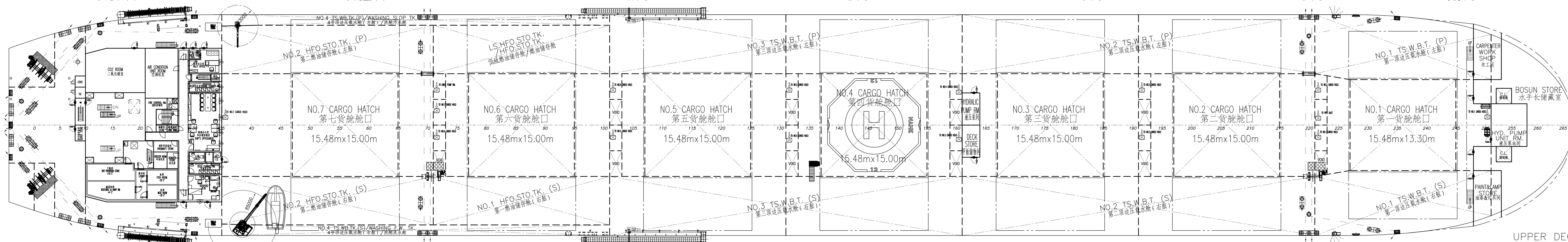
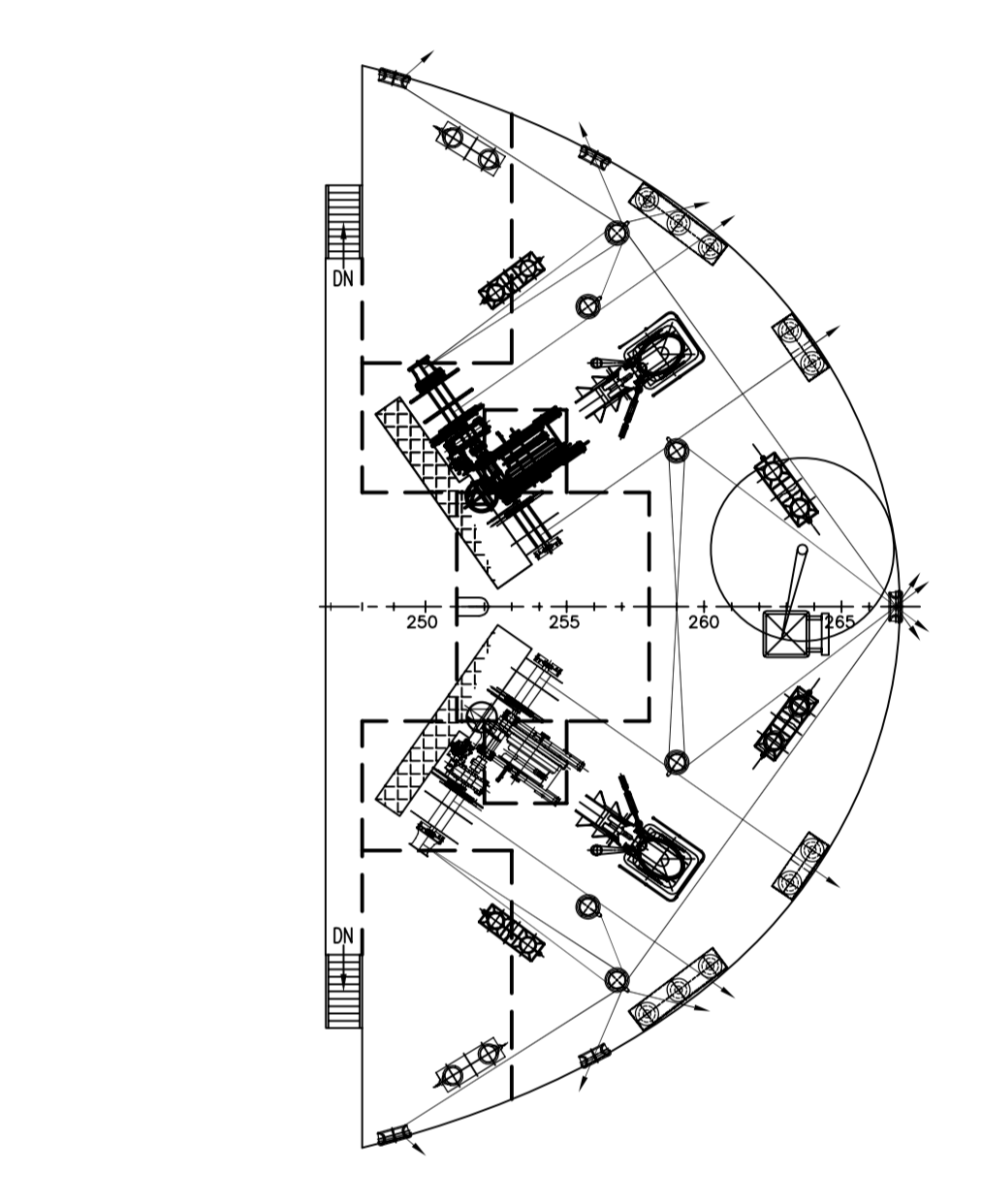
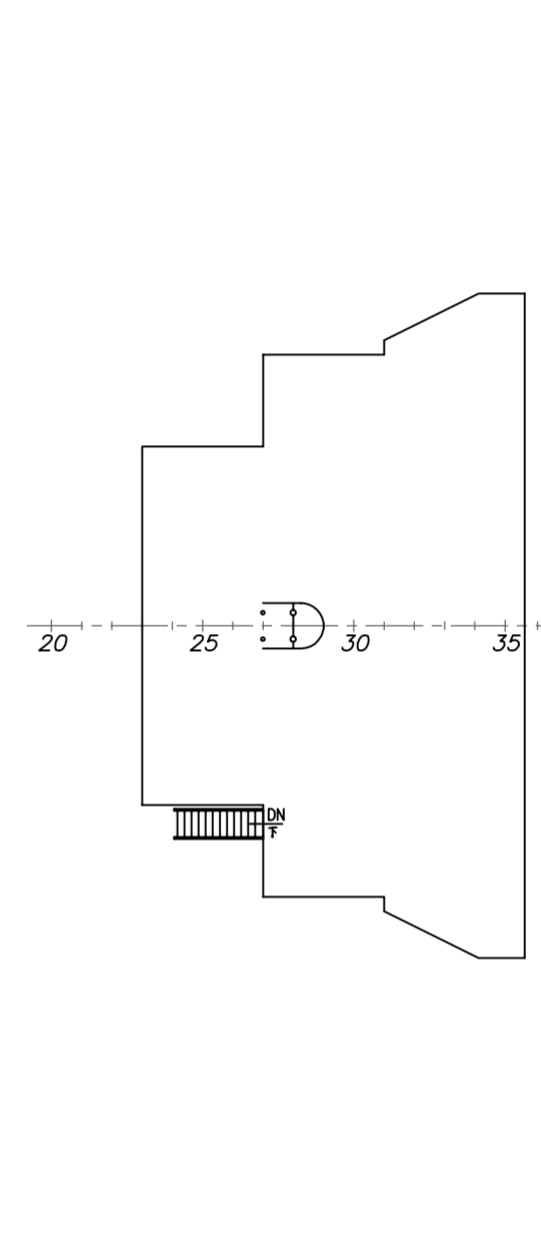
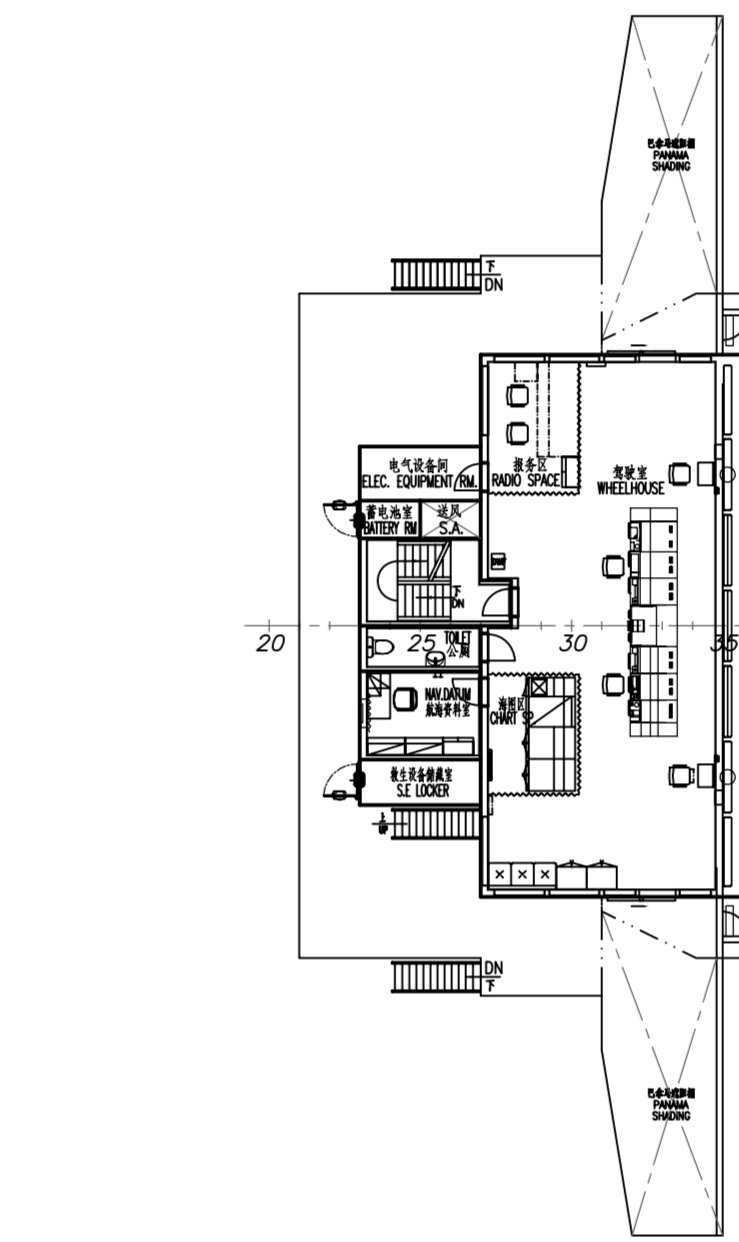
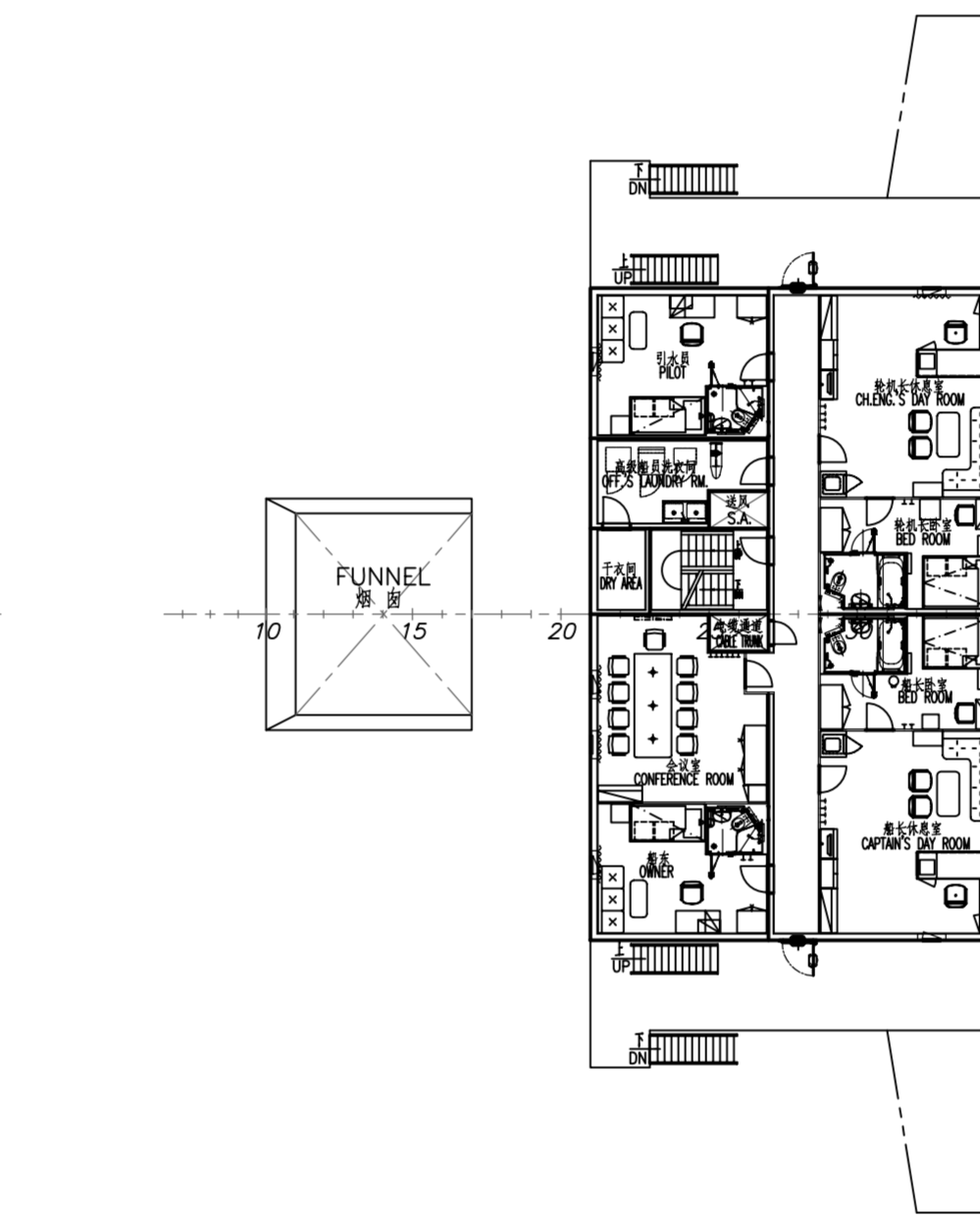
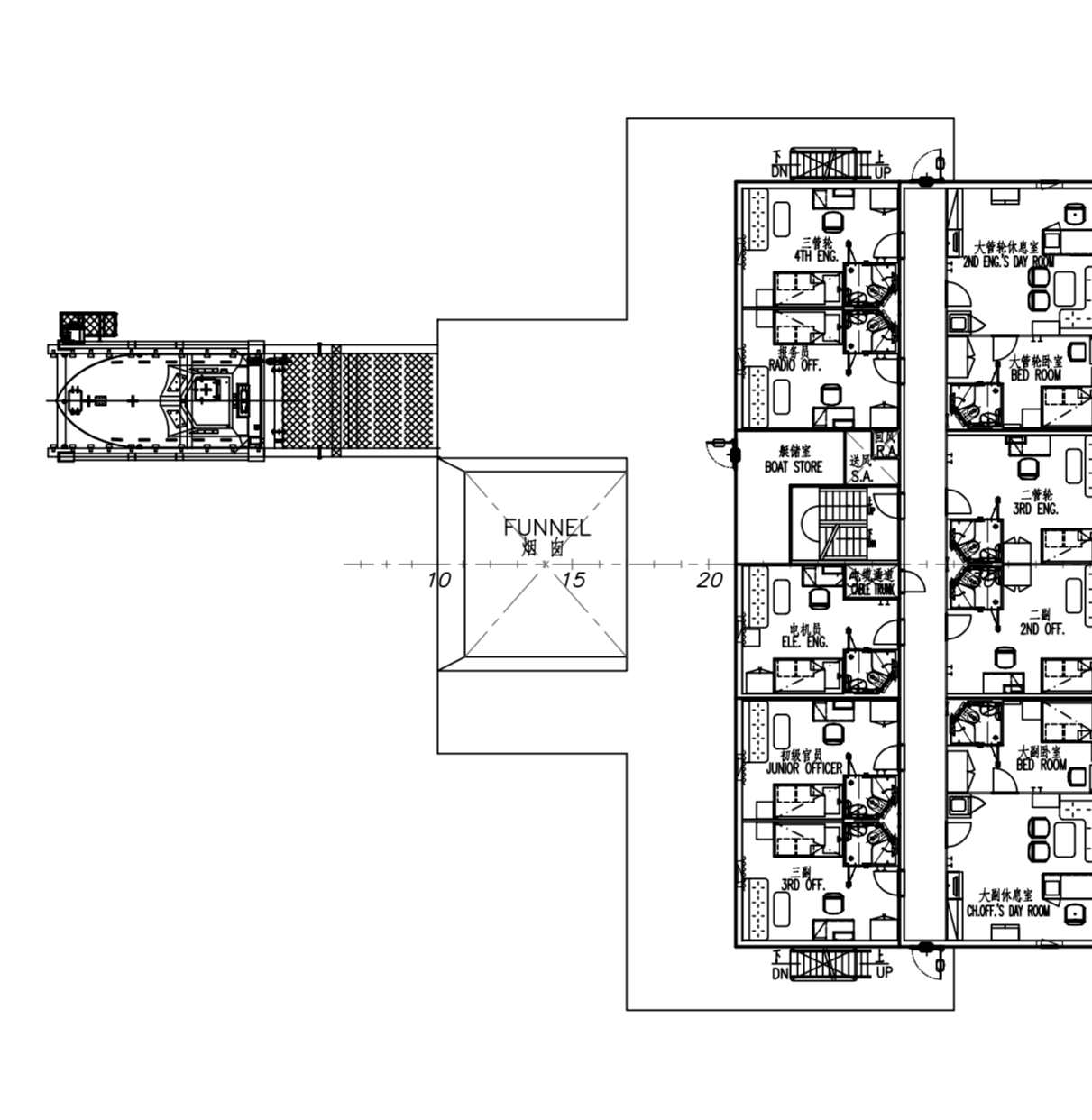
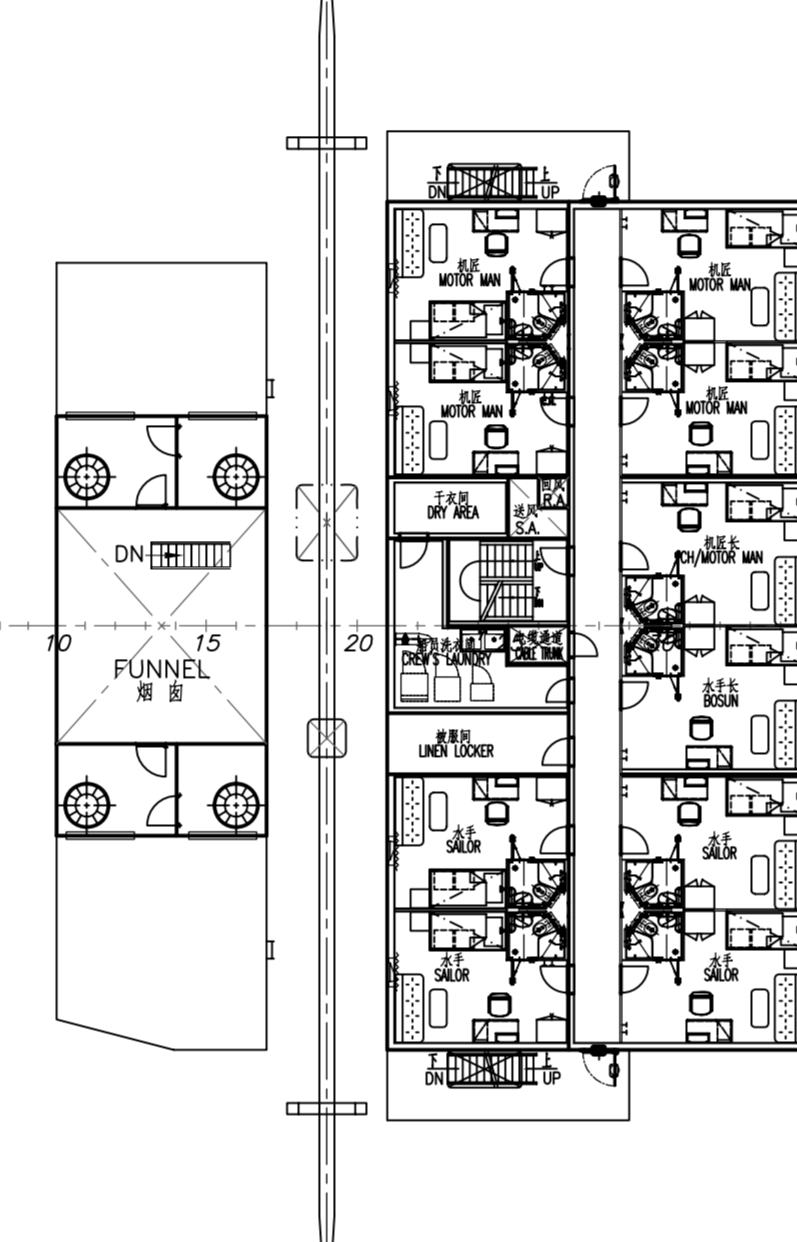
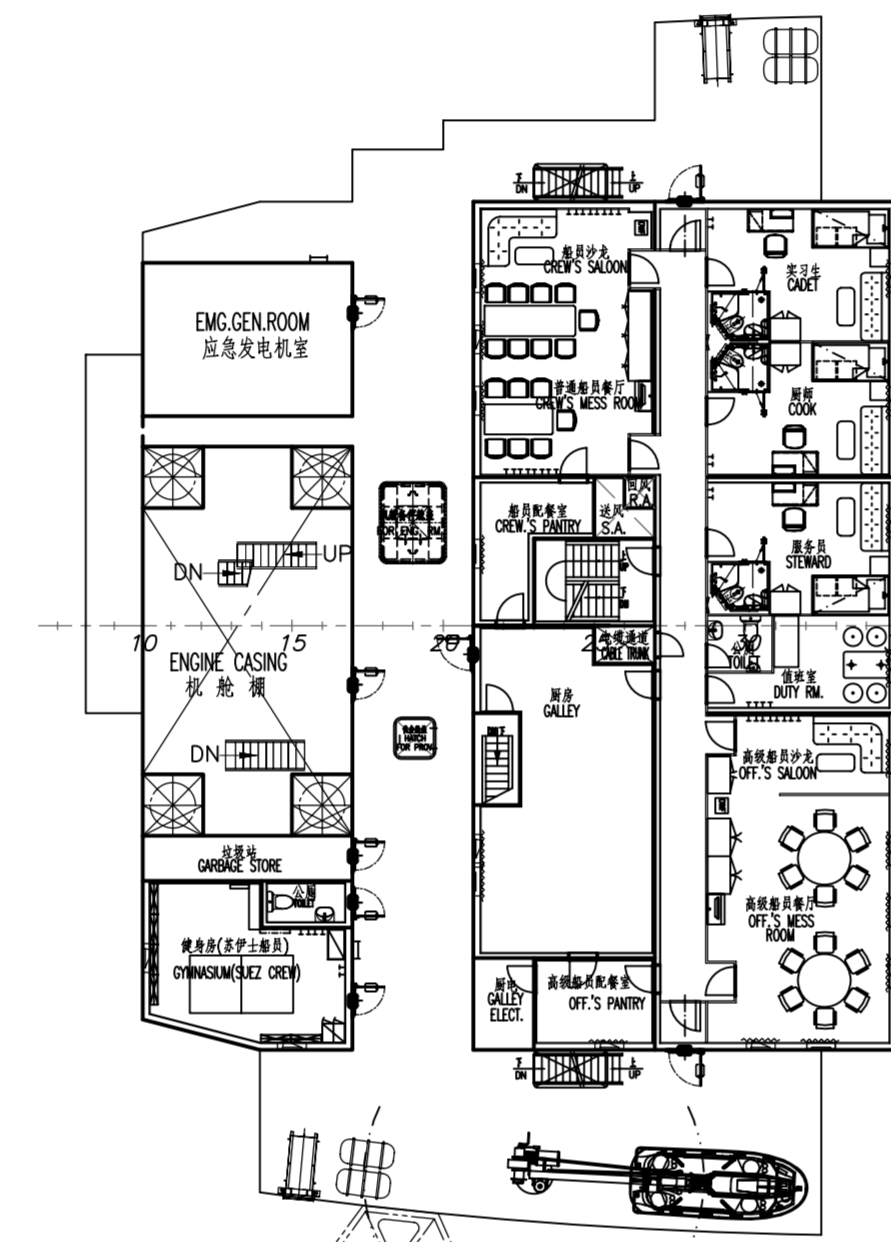
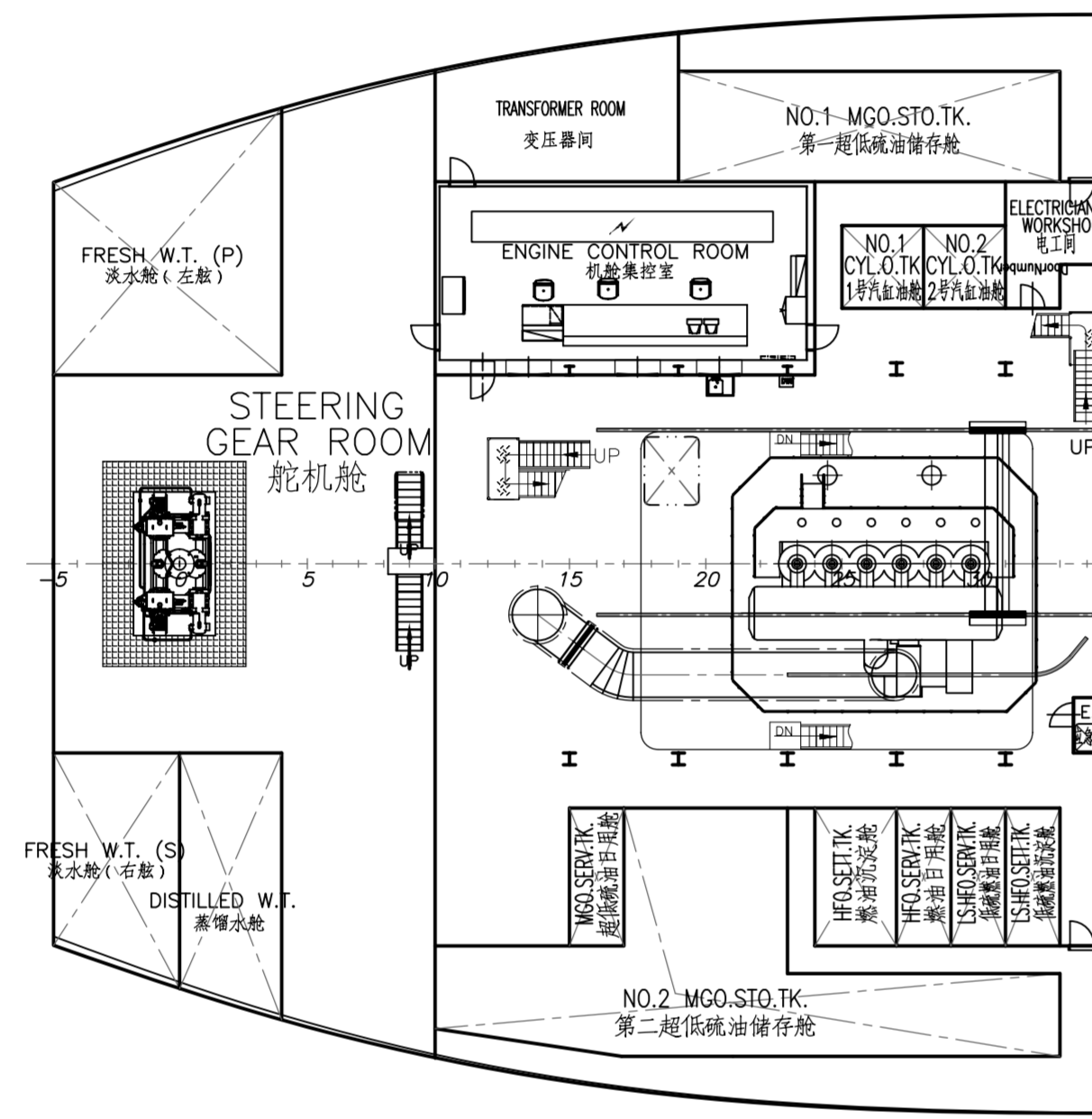
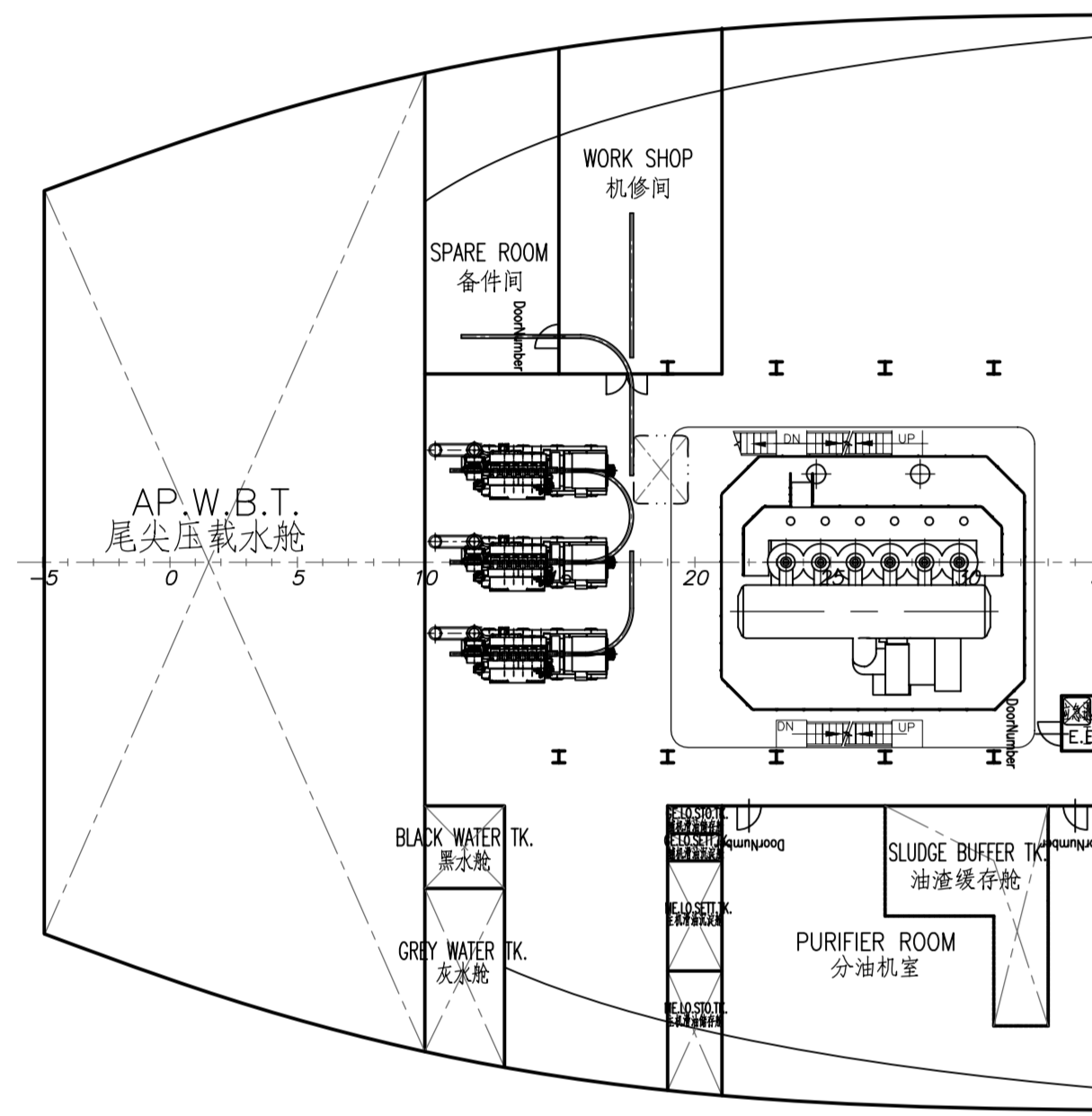
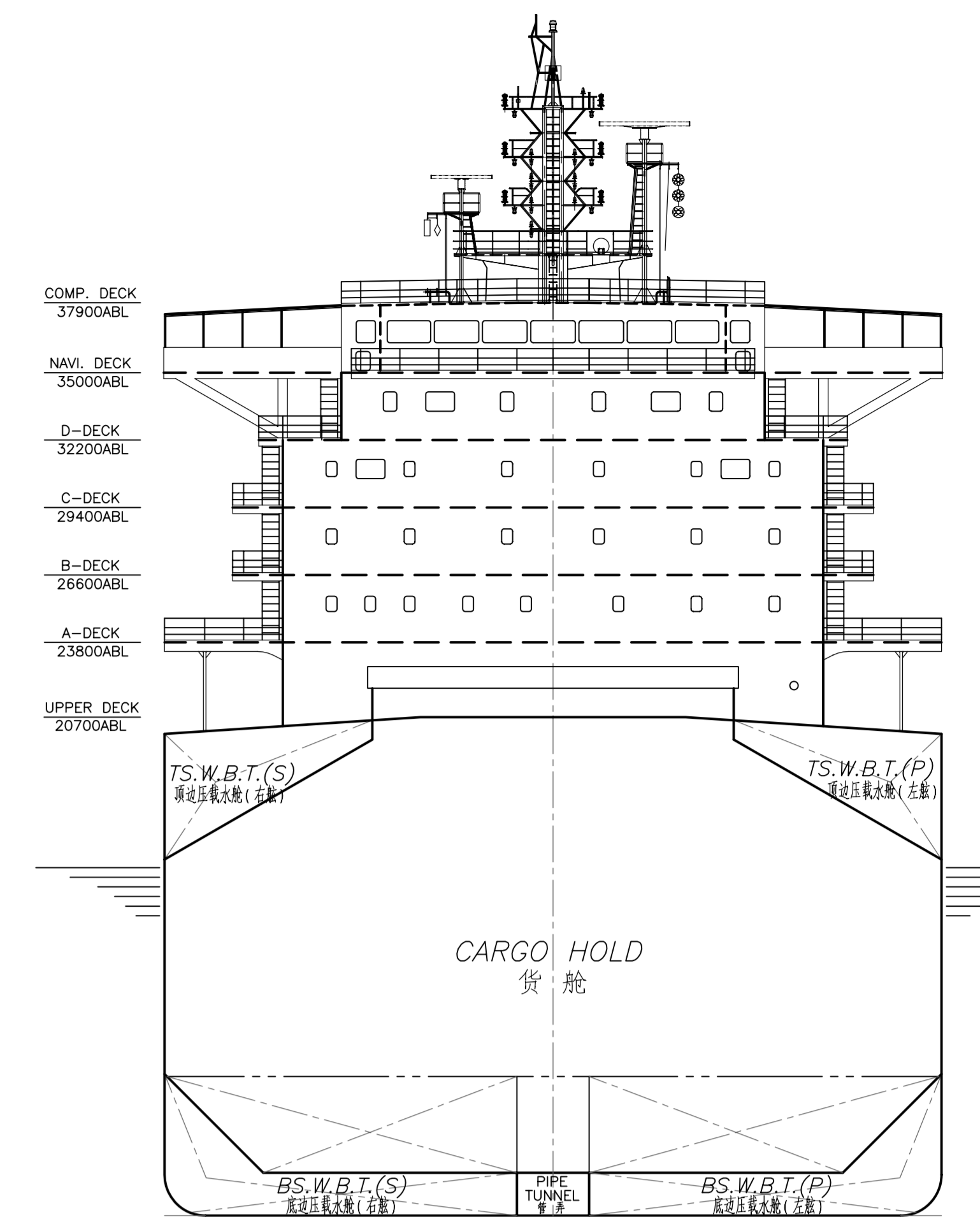
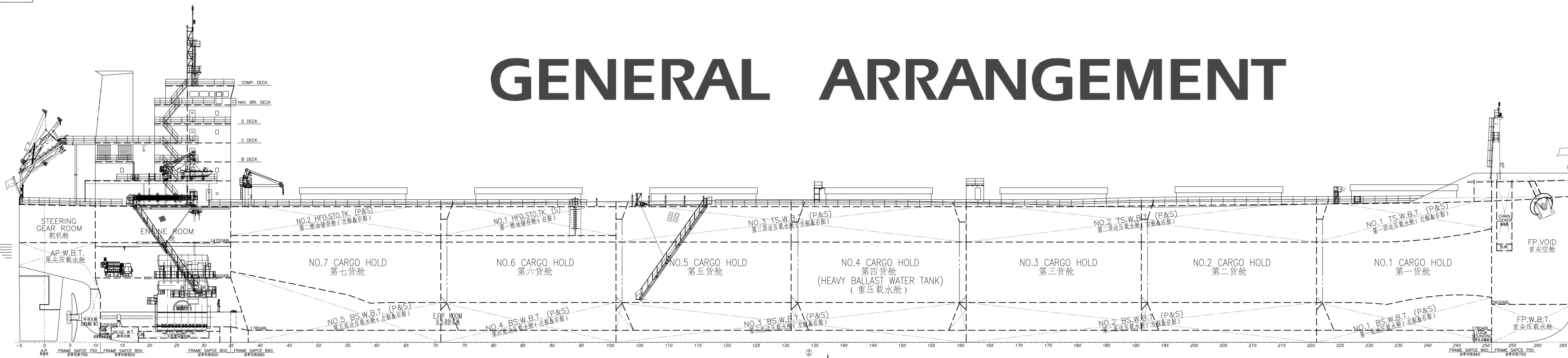


# GENERAL ARRANGEMENT



**MAIN PARTICULARS:**  
(主要参数)

LENGTH OVER ALL (总长)	229.00 m
LENGTH BETWEEN PERPENDICULARS (垂线间长)	225.30 m
BREADTH MOULDED (型宽)	32.26 m
DEPTH MOULDED (型深)	20.00 m
DESIGN DRAUGHT (设计吃水)	12.20 m
SCANTLING DRAUGHT (结构吃水)	14.45 m
DEADWEIGHT AT DESIGN DRAUGHT (设计吃水时的载重量)	abt. 65,500 t
DEADWEIGHT AT SCANTLING DRAUGHT (结构吃水时的载重量)	abt. 81,800 t
CARGO HOLD CAPACITY (舱容)	abt. 97,300 m <sup>3</sup>
COMPLEMENT (船员定额)	25P+1
MAIN ENGINE (主机型号)	MAN B&W 6S60ME-C8.2-TII
ENGINE OUTPUT(SMCR) (主机额定最大功率)	9,801kW x 90.3rpm
ENGINE OUTPUT(NCR) (主机额定功率)	7,448kW x 82.4rpm
SERVICE SPEED (服务航速)	14.3 knots
(at design draught 12.20m, NCR with 15% sea margin) (设计吃水12.20米时, 主机为额定功率NCR, 考虑15%的浪高裕度)	
ENDURANCE (续航力)	22,000 NM
CLASSIFICATION NOTATION (入级符号) DNV +1A1 Bulk Carrier ESP, CSR, COAT-PSPC(B), BC-A, Holds 2,4,6 may be empty, Grab[20] , E0, BWM-T, BIS, TMON	