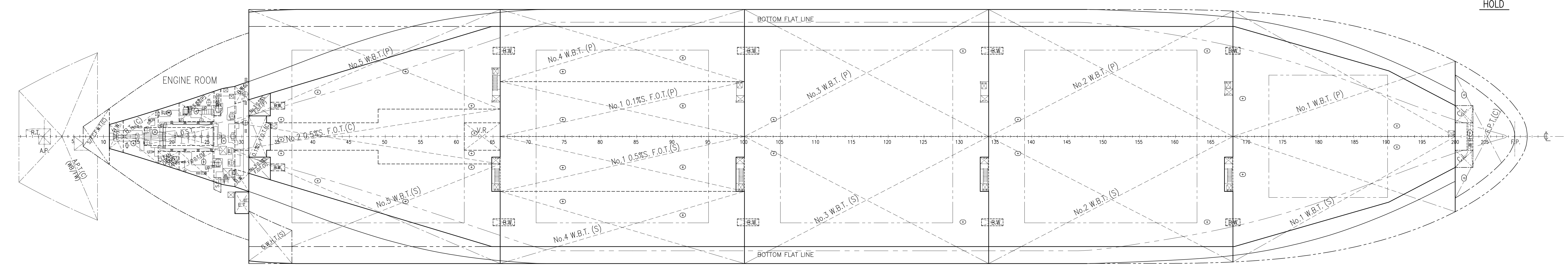
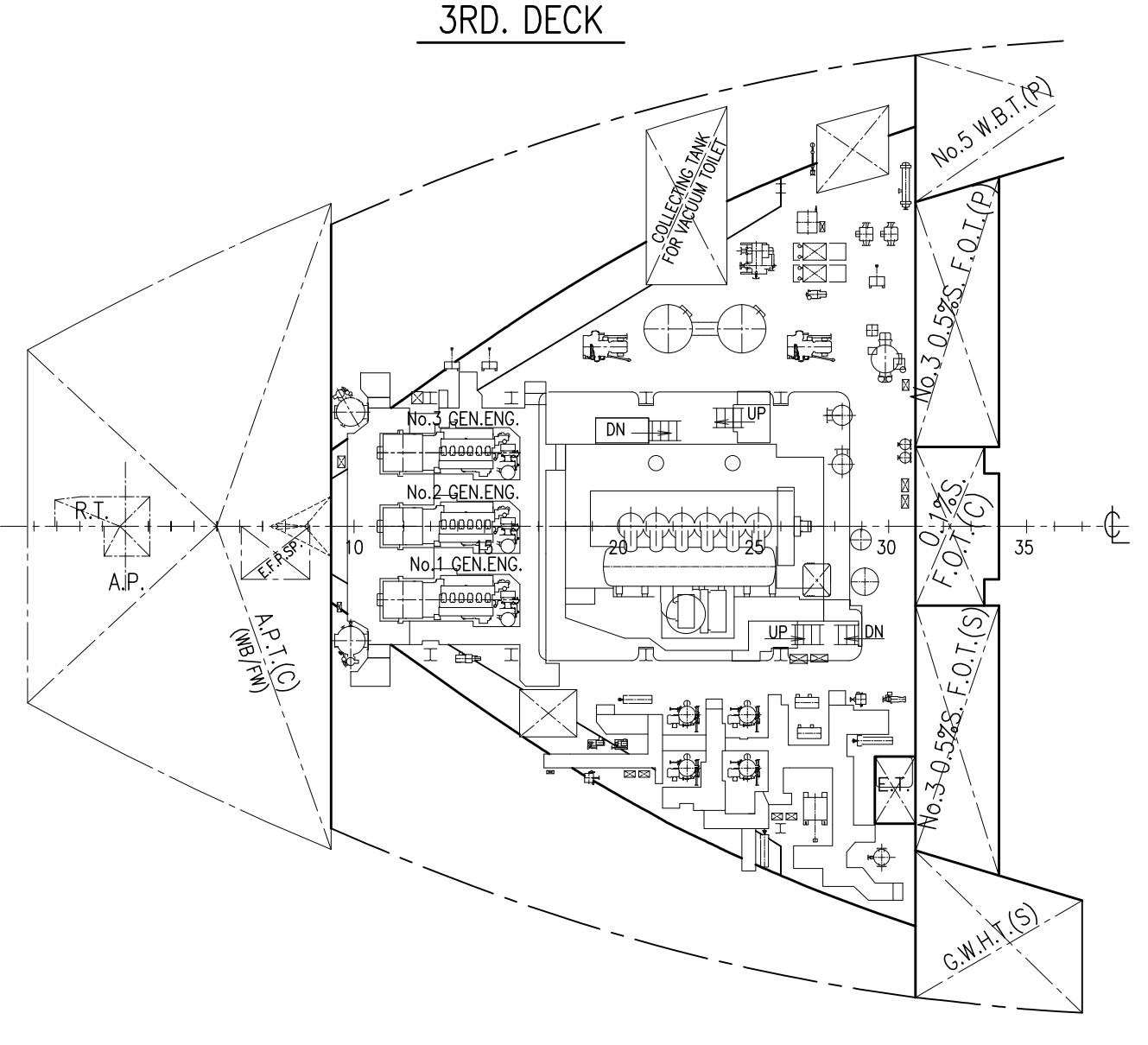
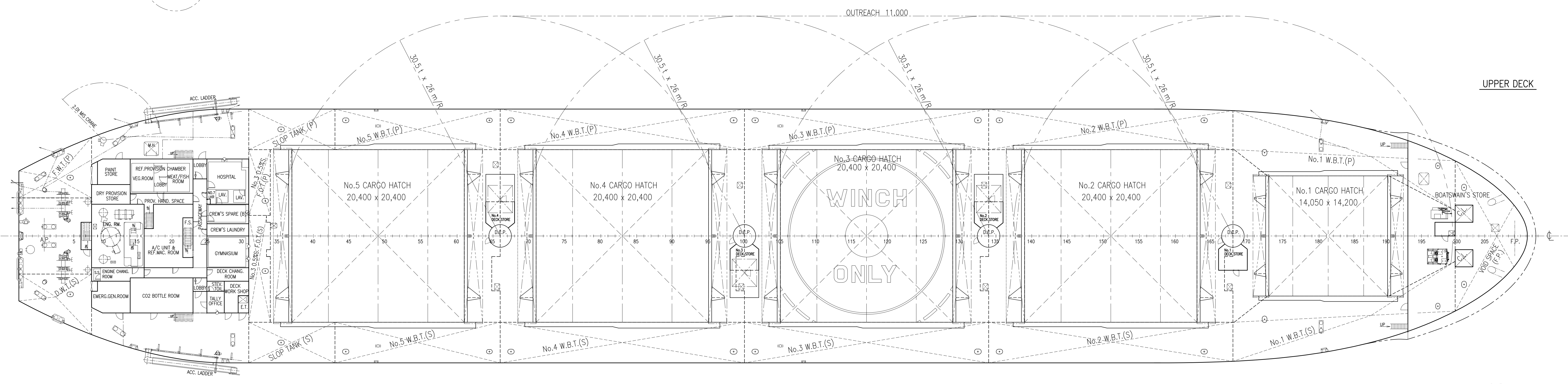
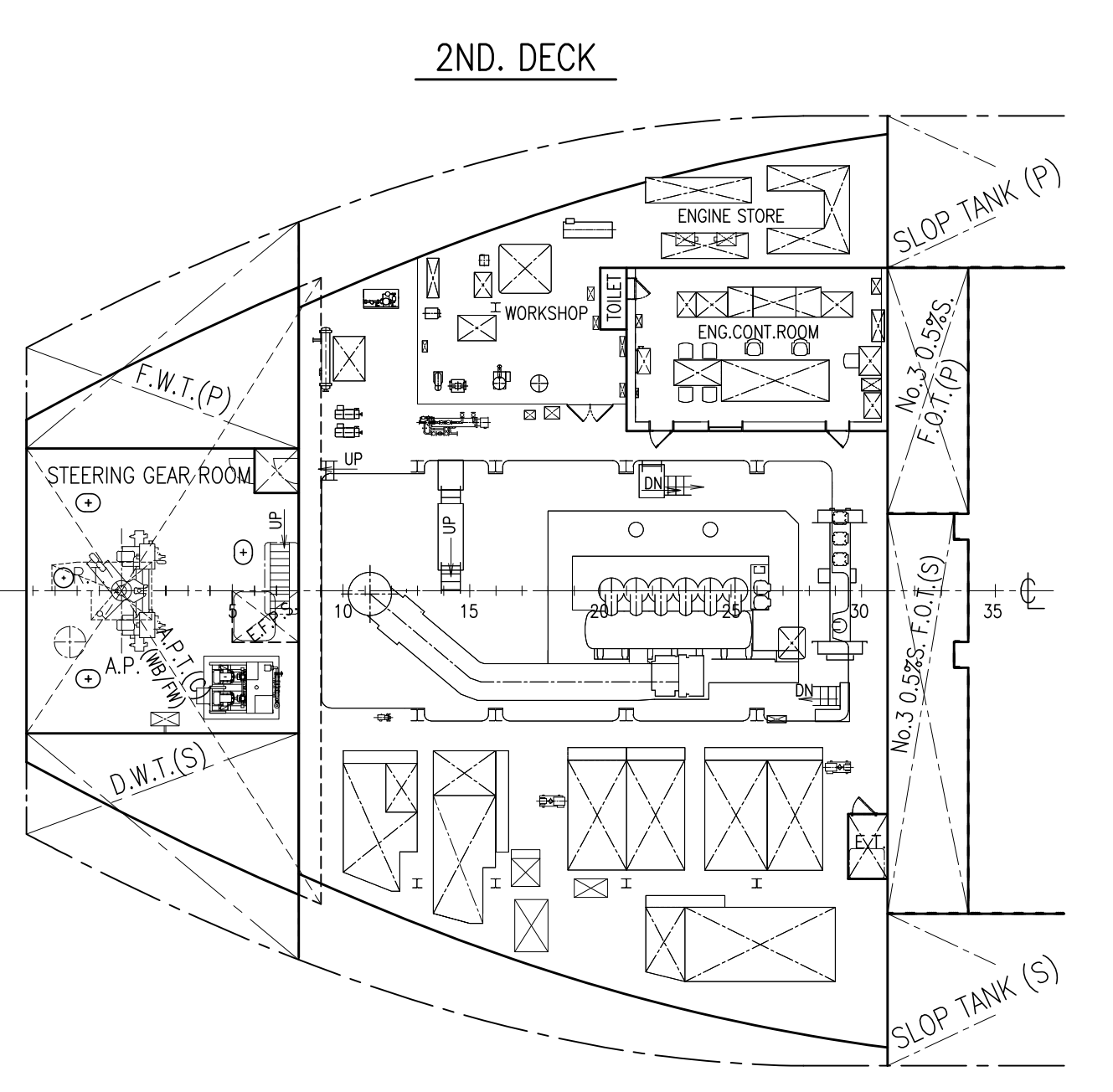
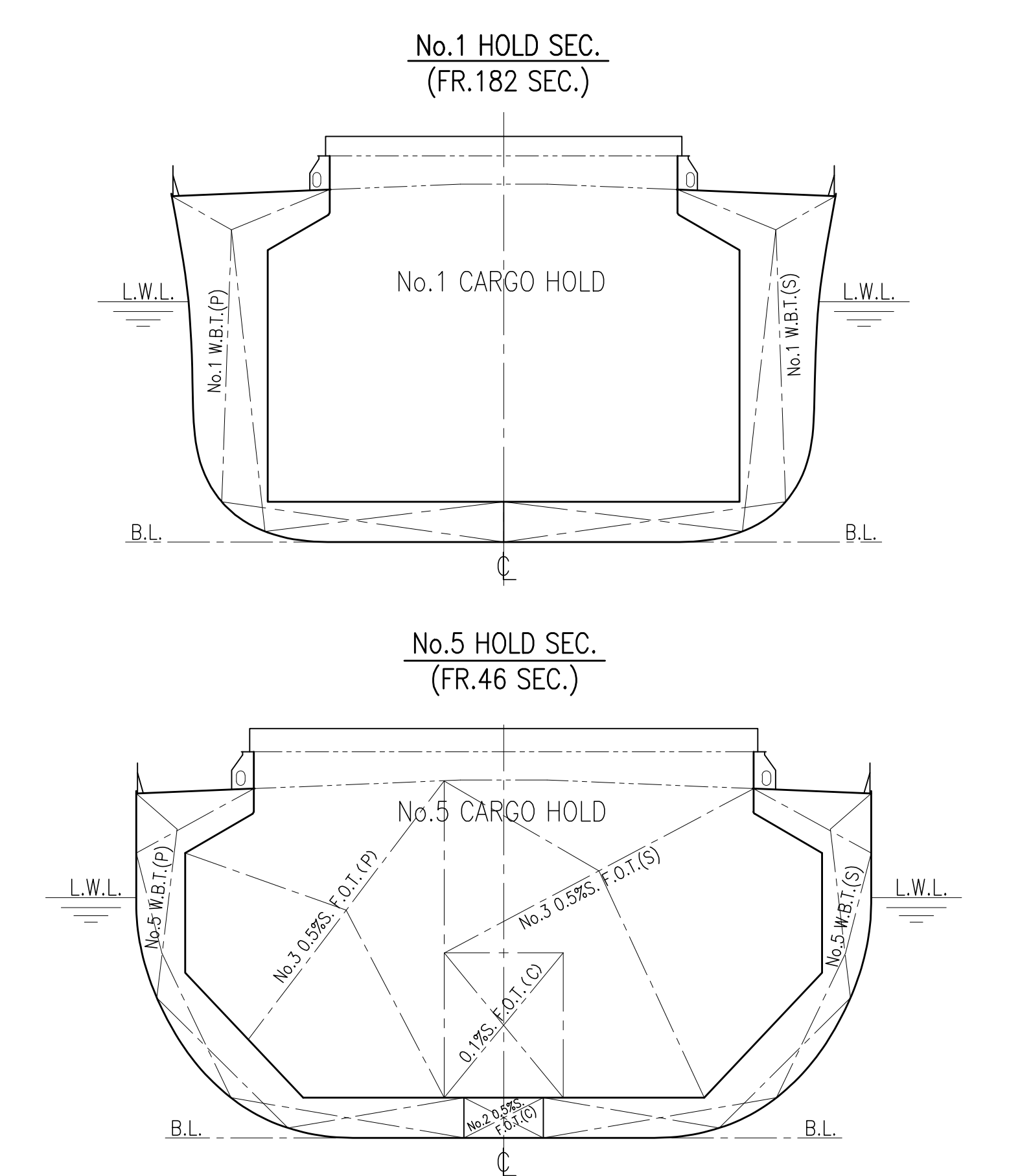
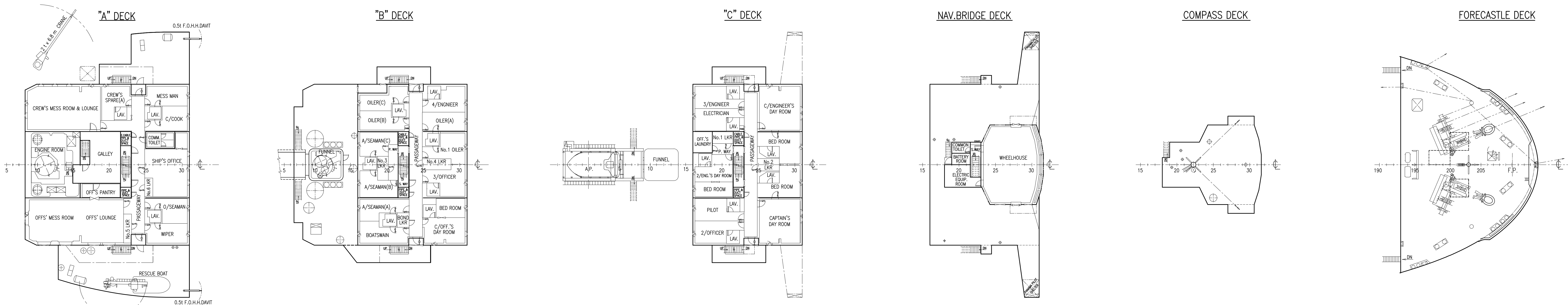
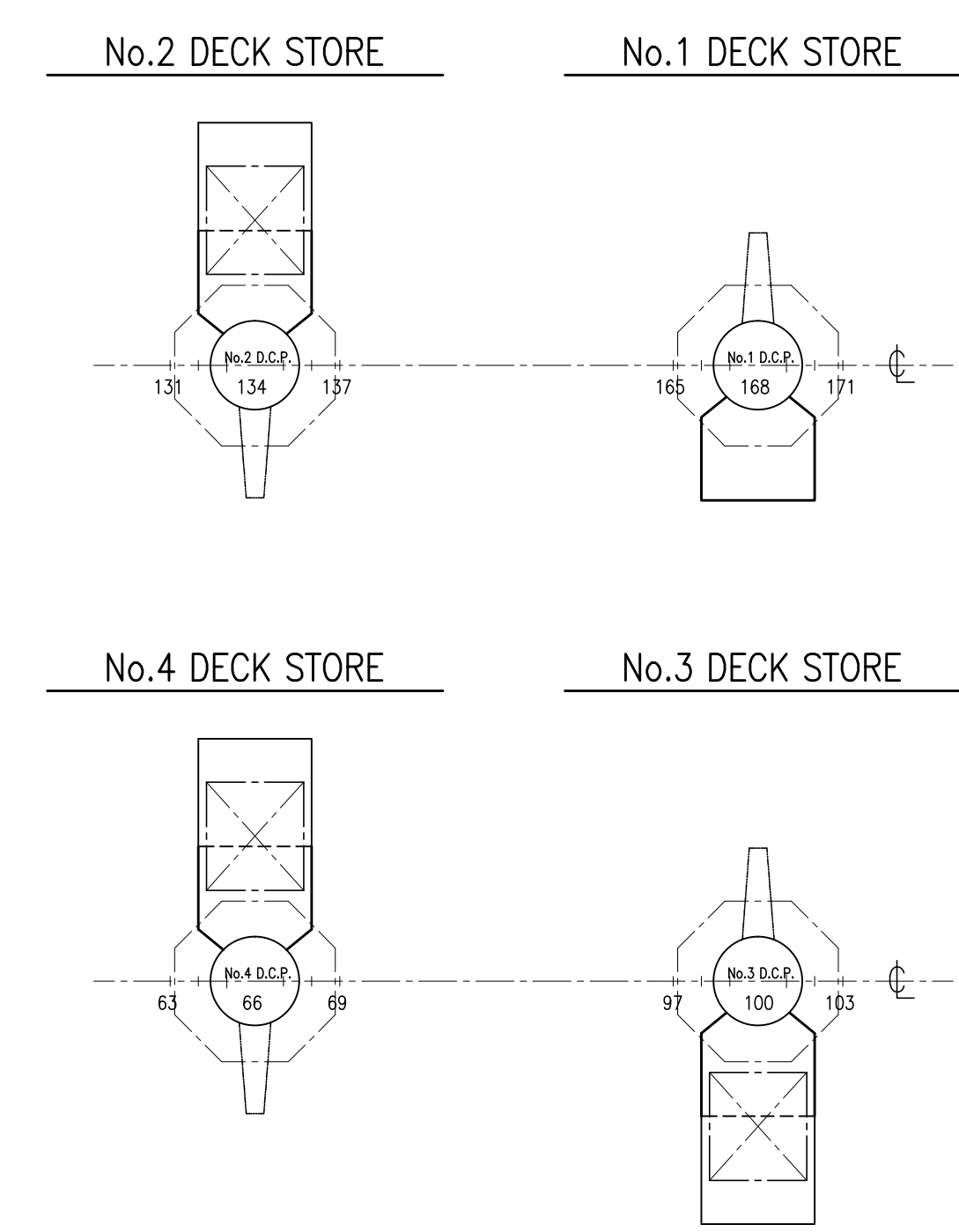
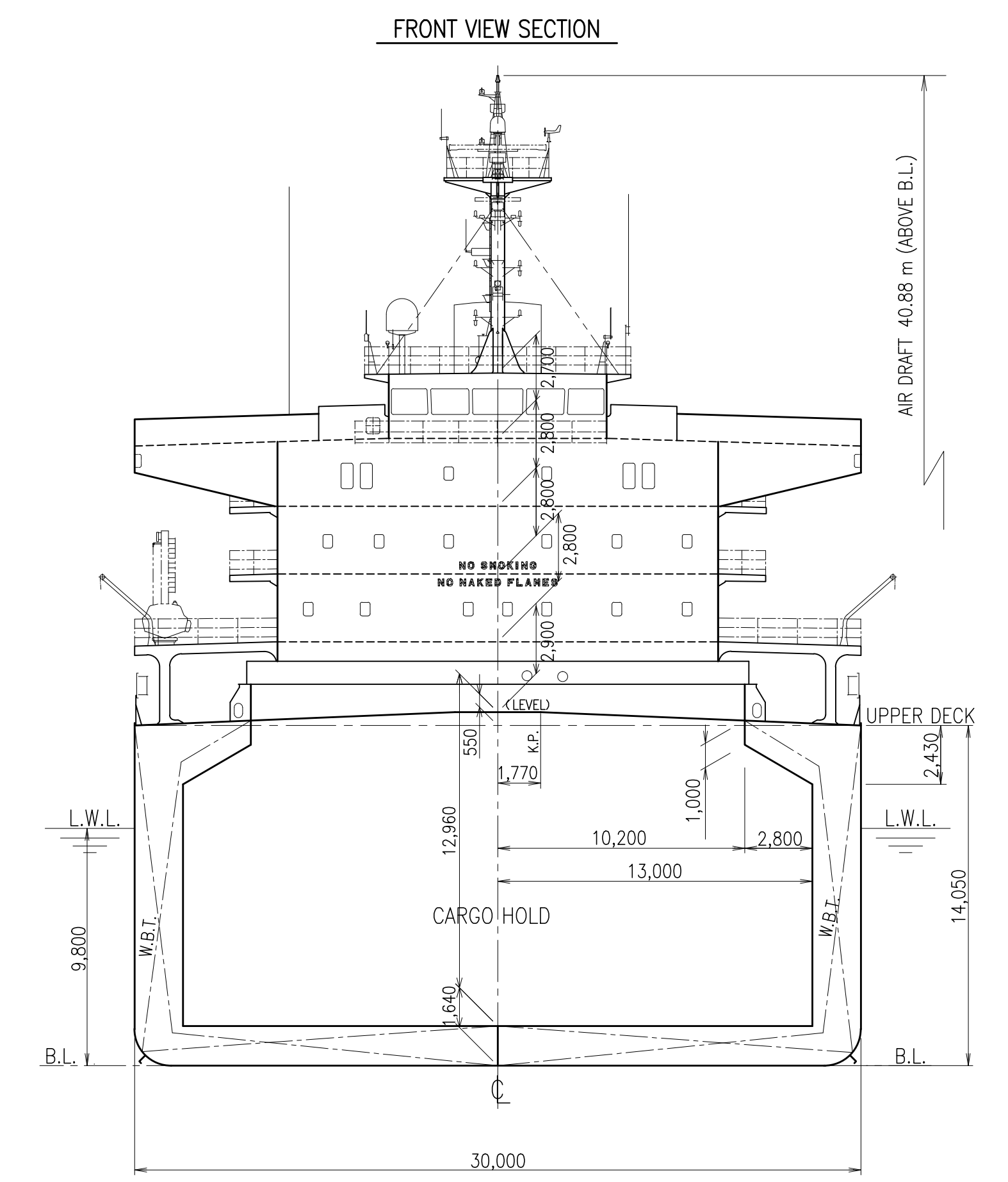
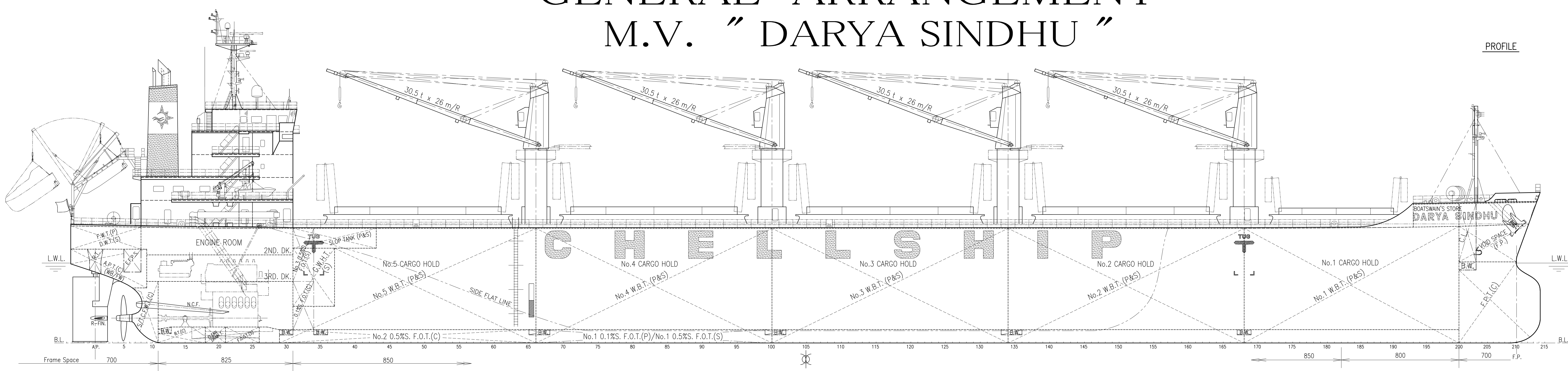


# GENERAL ARRANGEMENT M.V. "DARYA SINDHU"

BIBLIOGRAPHY  
 1) DESIGNED BY HAKODATE SHIPYARD  
 FOR S.No.894.  
 (Feb. 14, 2020)



PRINCIPAL PARTICULARS

LENGTH (O.A.)	179.97 m
LENGTH (P.P.)	174.00 m
BREADTH (MLD.)	30.00 m
DEPTH (MLD.)	14.05 m
SUMMER DRAFT (EXT.)	9.822 m
DEADWEIGHT (AT SUMMER)	34,790 t
INTERNATIONAL GROSS TONNAGE	21,546 t
INTERNATIONAL NET TONNAGE	11,196 t
MAIN ENGINE	MAN B&W 6S46ME-B8.5 x 1 set
M.C.O.	5,720 kW (7,777 PS) AT 110.0 rpm
N.C.O. (85% M.C.O.)	4,860 kW (6,607 PS) AT 104.2 rpm
SERVICE SPEED	14.0 kts
COMPLEMENTS	24 P
CLASSIFICATIONS	NK, NS* (BCM, BC-XII, GRAB, PSCB-WBT) (WS) (HM) (NC) (PSCM), MINS* (MO)
Strengthened for heavy cargo loading where hold nos.2, 4 may be empty.	
Double hull construction applied to all cargo holds.	
IMO NUMBER	9844992

THE HAKODATE DOCK CO., LTD.  
 HAKODATE SHIPYARD HAKODATE, JAPAN

DARYA SINDHU	
S.No.894	
GENERAL ARRANGEMENT	
FINISHED PLAN	
SCALE	1/200
THE HAKODATE DOCK CO., LTD. HAKODATE SHIPYARD HAKODATE JAPAN	
SHIP DESIGN DEPARTMENT INITIAL DESIGN SECTION	
APPROVED	<i>M. Terao</i>
CHECKED	<i>K. Nakamura</i>
CHECKED	<i>W. Tamura</i>
DRAWN	<i>Y. Iwawaki</i>
DATE	Feb. 14, 2020
SECTION NO.	S.No.894
DRAWING NO.	G-2/F-D
LIST NO.	P-3