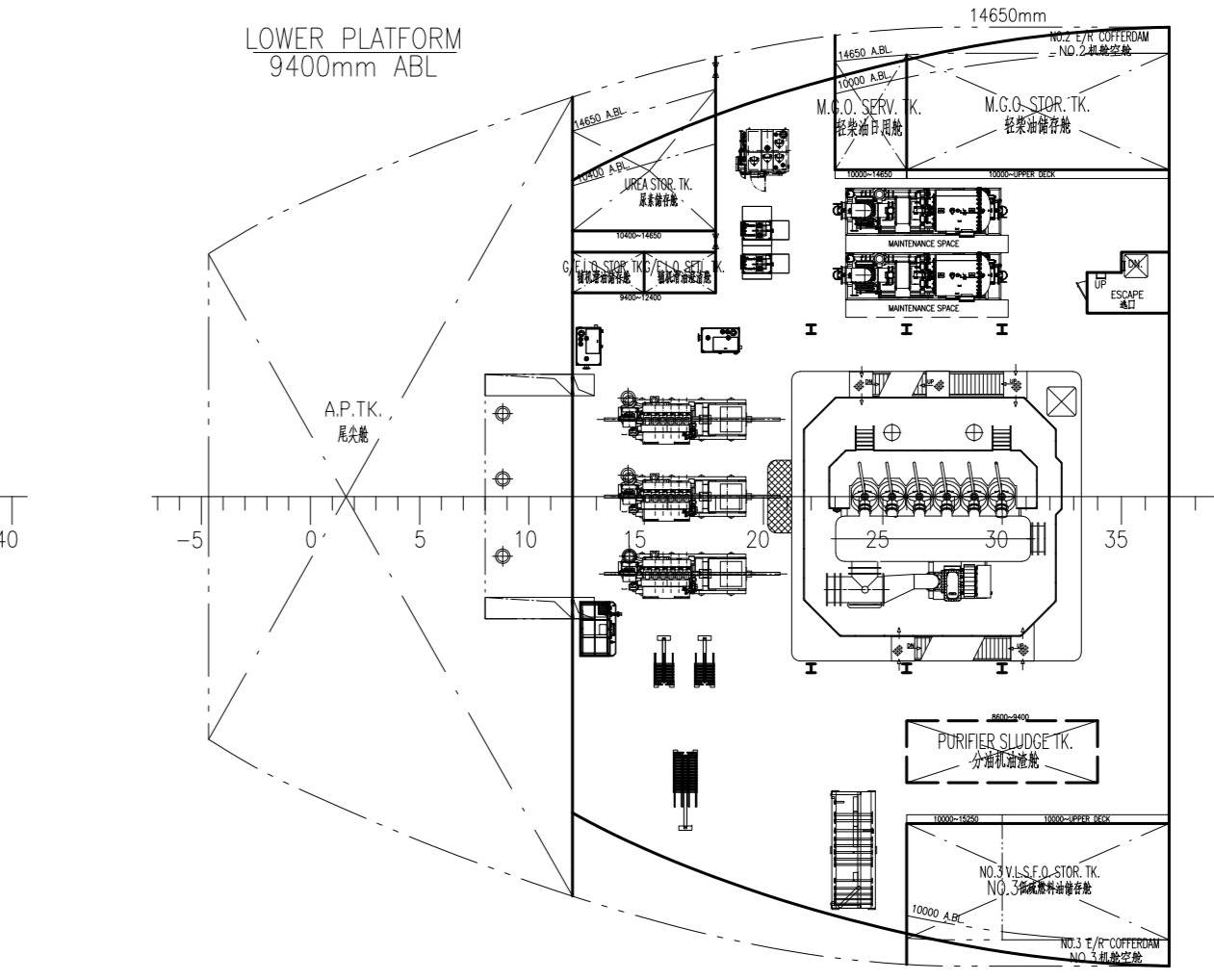
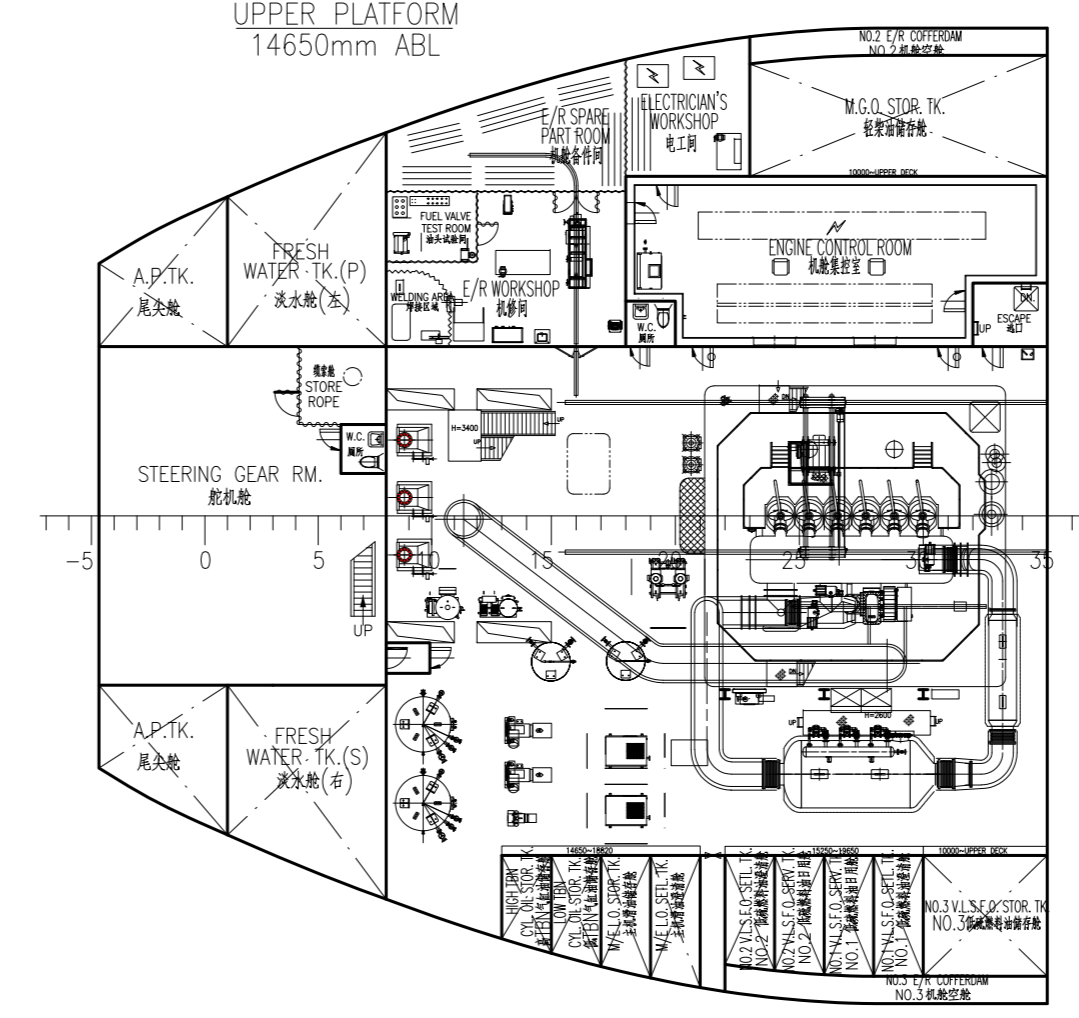
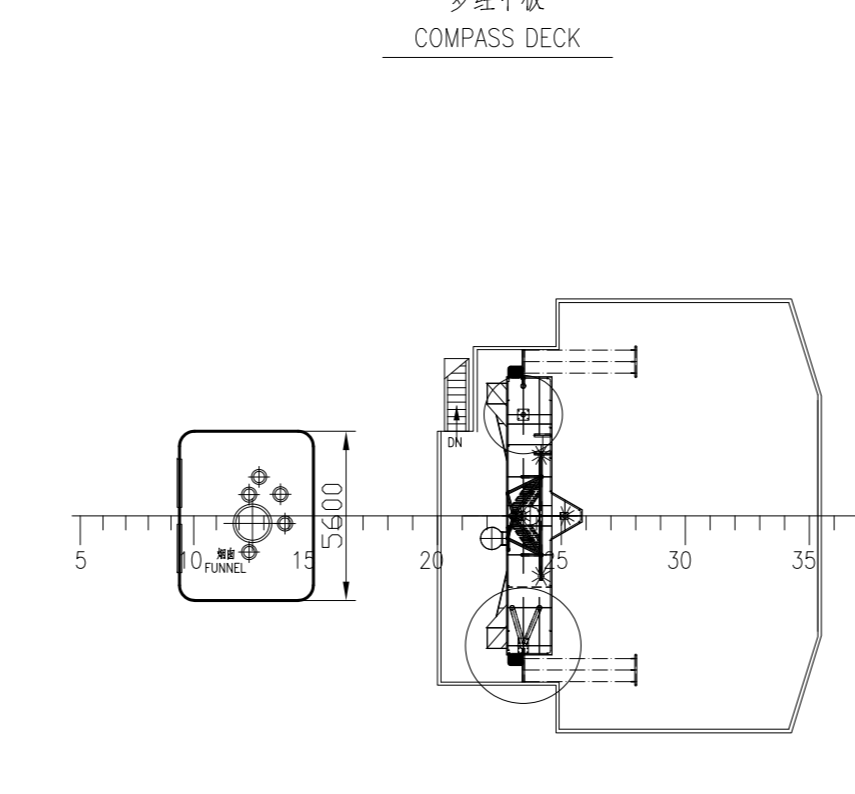
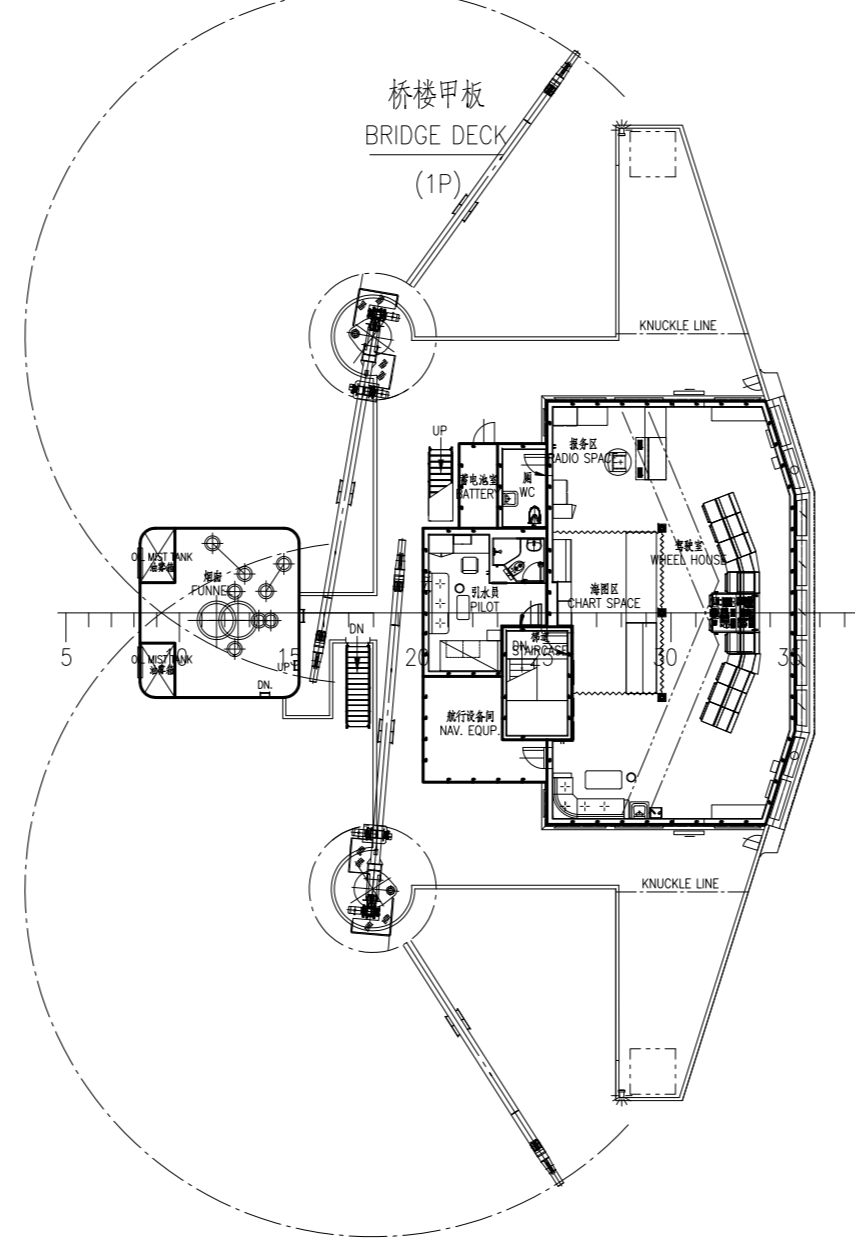
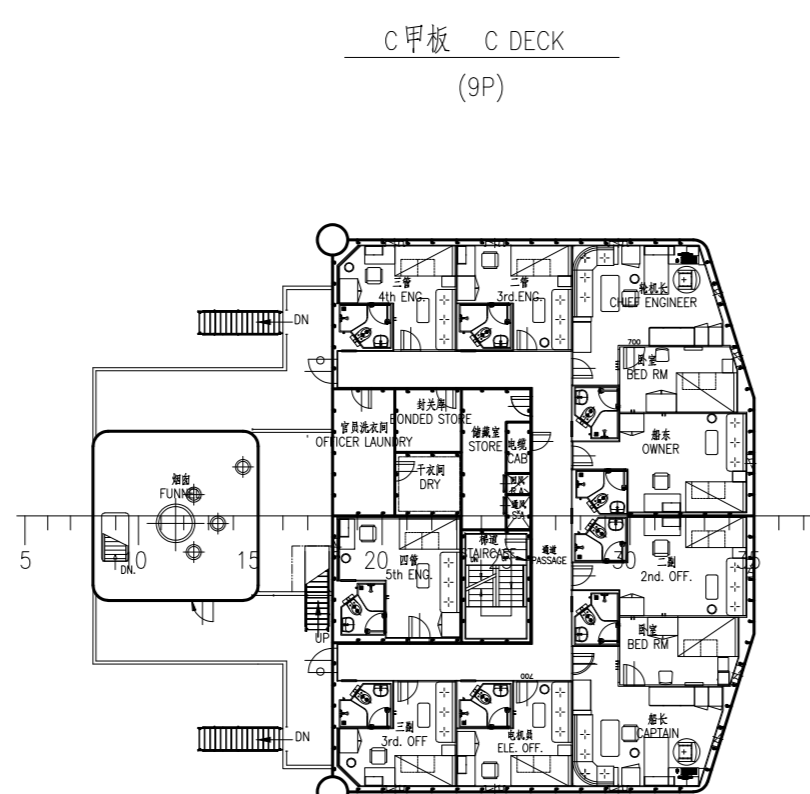
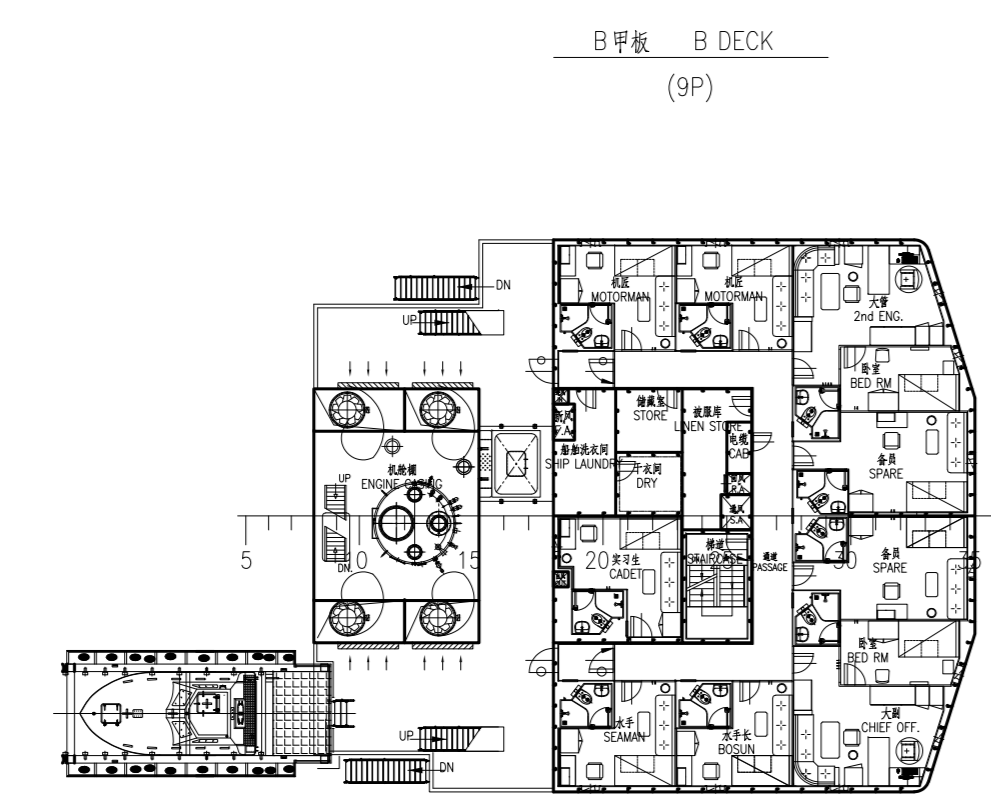
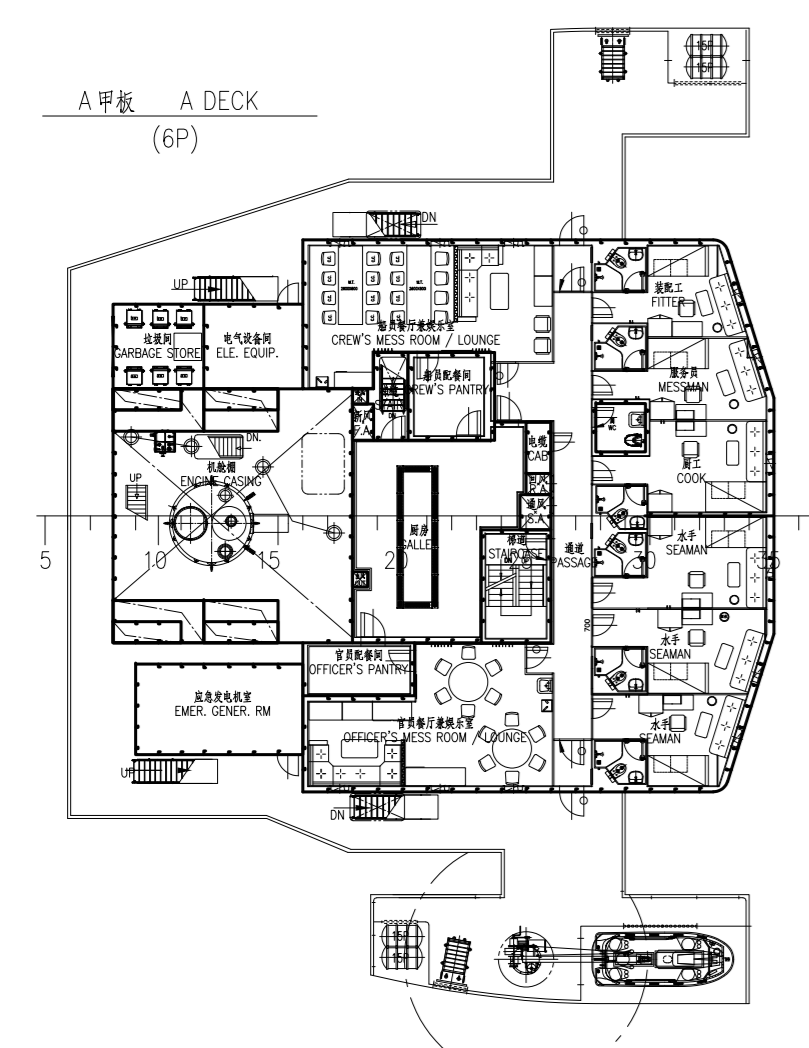
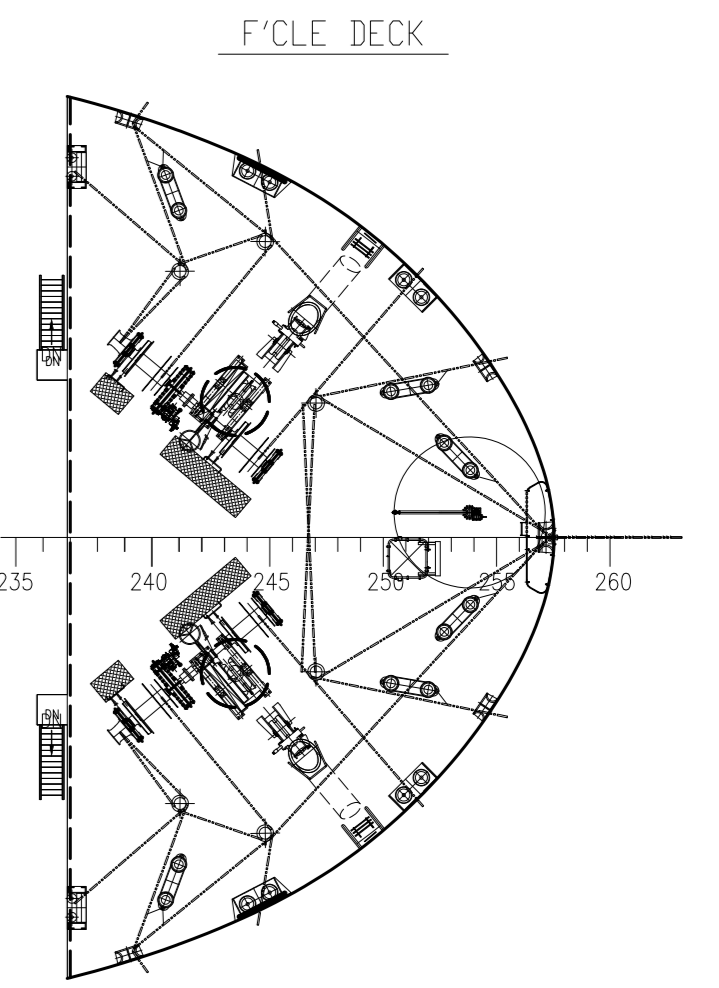
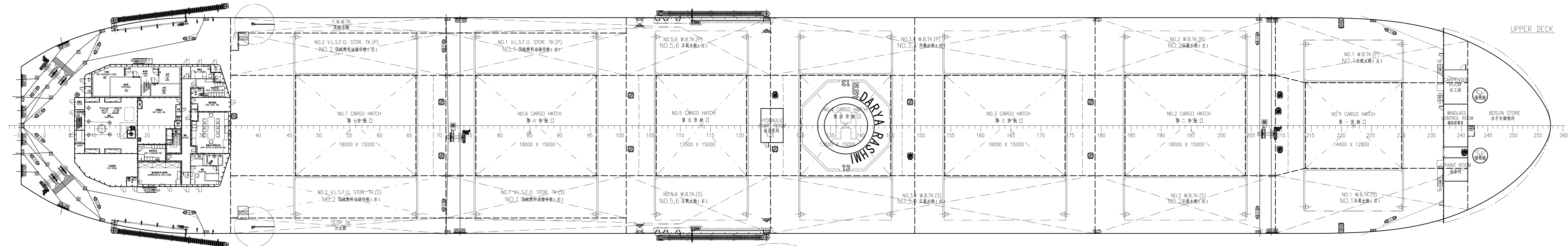
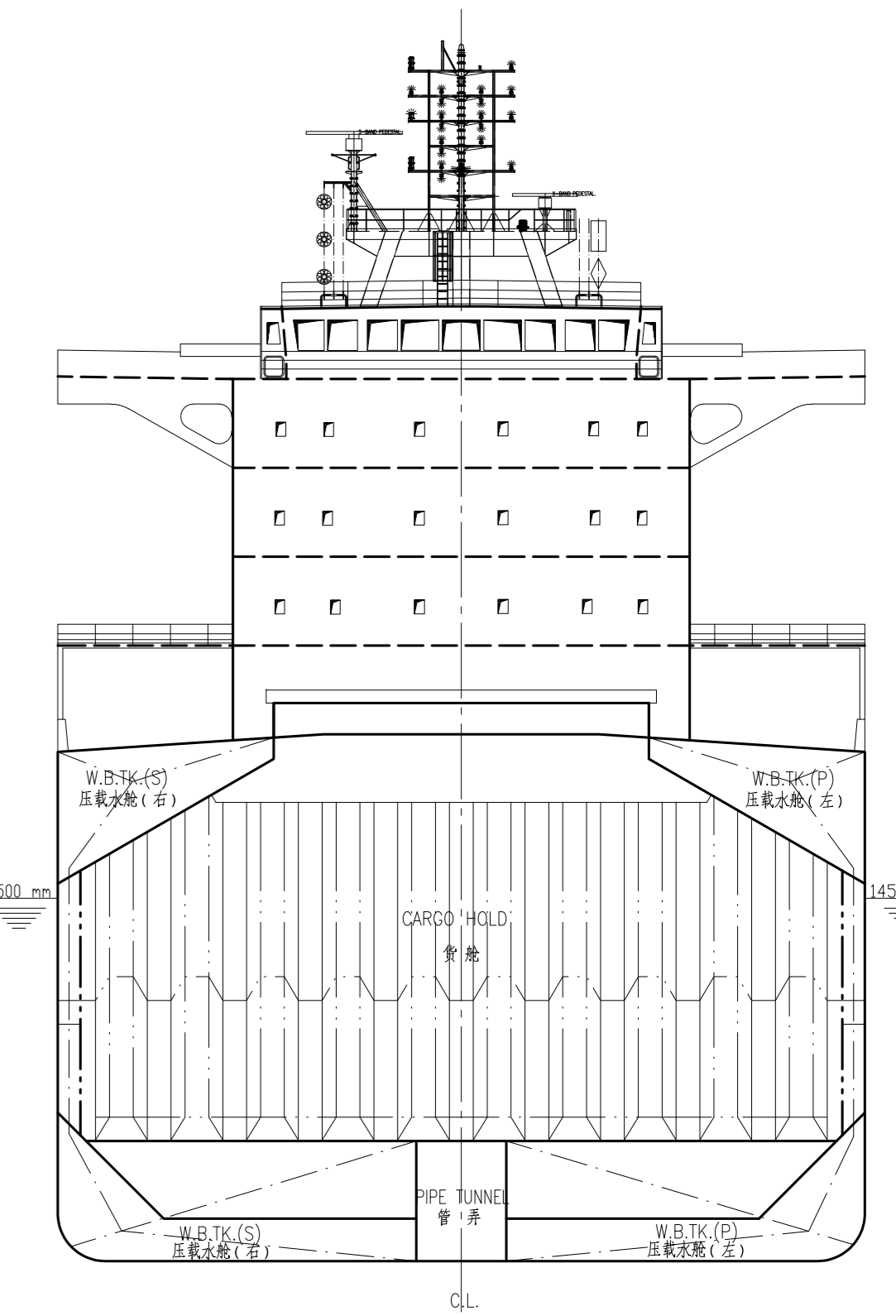
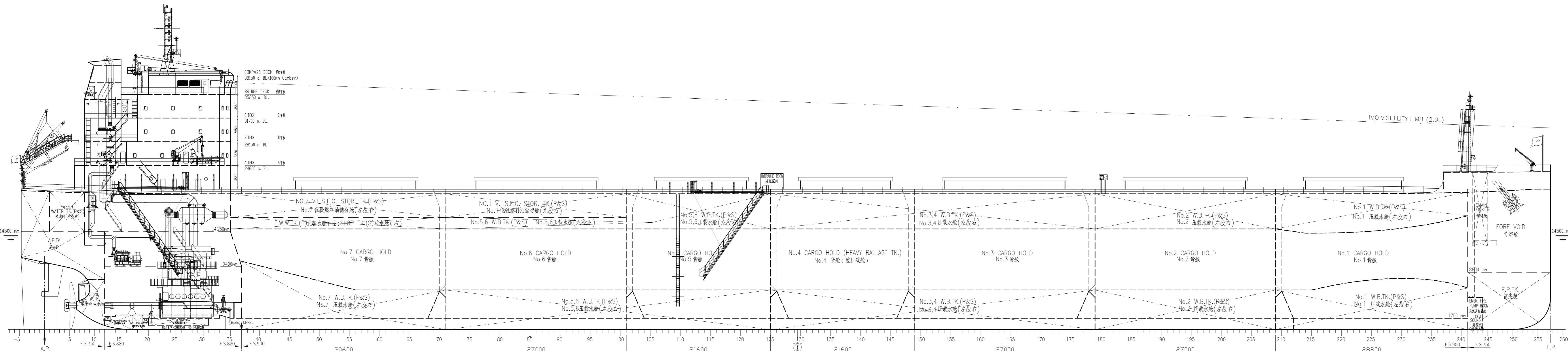


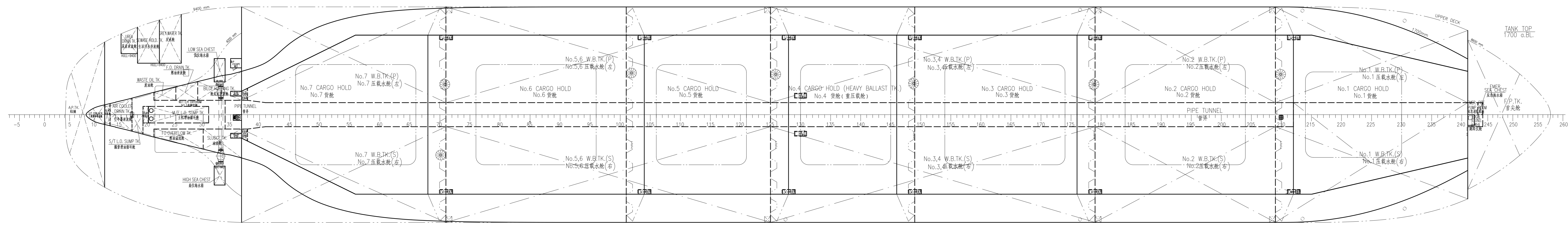
REV. 版本号	DESCRIPTION 描述	DRAWN 设计	CHECKED 校核	DATE 日期



PRINCIPAL PARTICULARS

主要尺度及数据

LENGTH O.A. 总长	229.00 m
LENGTH B.P. 船体长	205.50 m
BREADTH (MID.) 船宽	32.28 m
DEPTH (MID.) 型深	20.35 m
DESIGNED DRAWT 设计排水量	12,200 t
SCANTLING DRAWT 结构排水量	14,500 t
LOADWEIGHT 载重量 (AT SCANTLING DRAWT)	24,000 t
BANK ENGINE 主机	MAN B&W 6S40E-C10.5 (11) HP 5820 1set
SERVICE SPEED 服务航速 (AT DESIGN DRAWT, CSR, 15.85M, WITH ESS)	14.0 knots
ENDURANCE 续航力	opt. 25,000 n.mile
COMPLEMENT 定员	25 P.
CLASSIFICATION 船级	ABS +A1, (E), Bulk Carrier, BC-Alhanda 2-A & B may be empty
FLAG 旗国	MARSHALL ISLANDS



FINISHED PLAN
HULL NO. CX0859
IMO 9950404
G-17

FINAL DESIGN 完工设计	82000 DWT BULK CARRIER 82000吨散货船	SC4897G5-100-04
GENERAL ARRANGEMENT PLAN 总布置图	DARYA RASHMI	HULL NO.: CX0859
比例 1:1	图号 G-17	张数 1/250
设计 曹明	校核 曹明	审核 曹明
制图 曹明	绘图 曹明	审核 曹明
设计 曹明	校核 曹明	审核 曹明
制图 曹明	绘图 曹明	审核 曹明
设计 曹明	校核 曹明	审核 曹明
制图 曹明	绘图 曹明	审核 曹明